
Product Name: HIBADH Rabbit Polyclonal Antibody**Catalog #: APRab12013**

For research use only.

Summary

Description	Rabbit polyclonal Antibody
Host	Rabbit
Application	IHC, ICC/IF, ELISA
Reactivity	Human, Mouse, Rat
Conjugation	Unconjugated
Modification	Unmodified
Isotype	IgG
Clonality	Polyclonal
Form	Liquid
Concentration	1mg/ml
Storage	Aliquot and store at -20°C (valid for 12 months). Avoid freeze/thaw cycles.
Shipping	Ice bags
Buffer	Liquid in PBS containing 50% glycerol, 0.5% protective protein and 0.02% New type preservative N.
Purification	Affinity purification

Application

Dilution Ratio IHC 1:100-1:300, ICC/IF 1:50-1:200, ELISA 1:5000-1:20000

Molecular Weight

Antigen Information

Gene Name	HIBADH
Alternative Names	HIBADH; 3-hydroxyisobutyrate dehydrogenase; mitochondrial; HIBADH
Gene ID	11112.0
SwissProt ID	P31937
Immunogen	The antiserum was produced against synthesized peptide derived from human HIBADH. AA range:281-330

Background

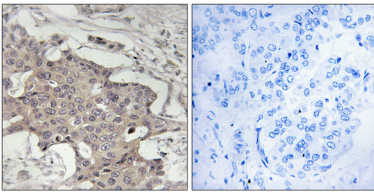
This gene encodes a mitochondrial 3-hydroxyisobutyrate dehydrogenase enzyme. The encoded protein plays a critical role in

the catabolism of L-valine by catalyzing the oxidation of 3-hydroxyisobutyrate to methylmalonate semialdehyde. [provided by RefSeq, Nov 2011],catalytic activity:3-hydroxy-2-methylpropanoate + NAD(+) = 2-methyl-3-oxopropanoate + NADH.,similarity:Belongs to the 3-hydroxyisobutyrate dehydrogenase family.,subunit:Homodimer.,

Research Area

Valine; leucine and isoleucine degradation;

Image Data



Immunohistochemistry analysis of paraffin-embedded human breast carcinoma tissue, using HIBADH Antibody. The picture on the right is blocked with the synthesized peptide.