

---

**Product Name: Hepatic Lipase Rabbit Polyclonal Antibody****Catalog #: APRab11983**

For research use only.

**Summary**

<b>Description</b>	Rabbit polyclonal Antibody
<b>Host</b>	Rabbit
<b>Application</b>	WB,IHC,ICC/IF,ELISA
<b>Reactivity</b>	Human,Rat,Mouse
<b>Conjugation</b>	Unconjugated
<b>Modification</b>	Unmodified
<b>Isotype</b>	IgG
<b>Clonality</b>	Polyclonal
<b>Form</b>	Liquid
<b>Concentration</b>	1mg/ml
<b>Storage</b>	Aliquot and store at -20°C (valid for 12 months). Avoid freeze/thaw cycles.
<b>Shipping</b>	Ice bags
<b>Buffer</b>	Liquid in PBS containing 50% glycerol, 0.5% protective protein and 0.02% New type preservative N.
<b>Purification</b>	Affinity purification

**Application**

<b>Dilution Ratio</b>	WB 1:500-1:2000,IHC 1:100-1:300,ICC/IF 1:50-1:200,ELISA 1:5000-1:20000
<b>Molecular Weight</b>	56kDa

**Antigen Information**

<b>Gene Name</b>	LIPC
<b>Alternative Names</b>	LIPC; HTGL; Hepatic triacylglycerol lipase; HL; Hepatic lipase; Lipase member C
<b>Gene ID</b>	3990.0
<b>SwissProt ID</b>	P11150
<b>Immunogen</b>	The antiserum was produced against synthesized peptide derived from human LIPC. AA range:301-350

**Background**

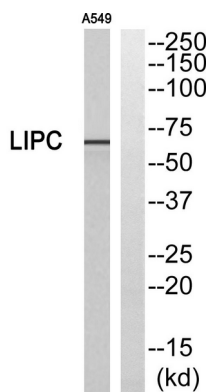
LIPC encodes hepatic triglyceride lipase, which is expressed in liver. LIPC has the dual functions of triglyceride hydrolase and

ligand/bridging factor for receptor-mediated lipoprotein uptake. [provided by RefSeq, Jul 2008],catalytic activity:Triacylglycerol + H(2)O = diacylglycerol + a carboxylate.,disease:Defects in LIPC are the cause of hepatic lipase deficiency (HL deficiency) [MIM:151670].,function:Hepatic lipase has the capacity to catalyze hydrolysis of phospholipids, mono-, di-, and triglycerides, and acyl-CoA thioesters. It is an important enzyme in HDL metabolism. Hepatic lipase binds heparin.,online information:The Singapore human mutation and polymorphism database,similarity:Belongs to the AB hydrolase superfamily. Lipase family.,similarity:Contains 1 PLAT domain.,

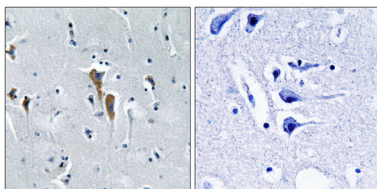
## Research Area

Glycerolipid metabolism;

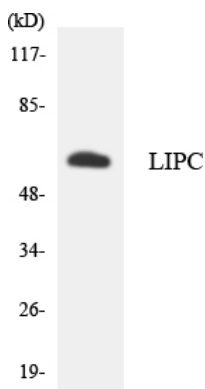
## Image Data



Western blot analysis of LIPC Antibody. The lane on the right is blocked with the LIPC peptide.



Immunohistochemistry analysis of paraffin-embedded human brain, using LIPC Antibody. The lane on the right is blocked with the LIPC peptide.



Western blot analysis of the lysates from HT-29 cells using LIPC antibody.

Western Blot analysis of A549 cells using Hepatic Lipase Polyclonal Antibody

