
Product Name: HEI10 Rabbit Polyclonal Antibody**Catalog #: APRab11967**

For research use only.

Summary

Description	Rabbit polyclonal Antibody
Host	Rabbit
Application	WB,IHC,ICC/IF,ELISA
Reactivity	Human,Rat,Mouse
Conjugation	Unconjugated
Modification	Unmodified
Isotype	IgG
Clonality	Polyclonal
Form	Liquid
Concentration	1mg/ml
Storage	Aliquot and store at -20°C (valid for 12 months). Avoid freeze/thaw cycles.
Shipping	Ice bags
Buffer	Liquid in PBS containing 50% glycerol, 0.5% protective protein and 0.02% New type preservative N.
Purification	Affinity purification

Application

Dilution Ratio	WB 1:500-1:2000,IHC 1:100-1:300,ICC/IF 1:50-1:200,ELISA 1:20000-1:40000
Molecular Weight	32kDa

Antigen Information

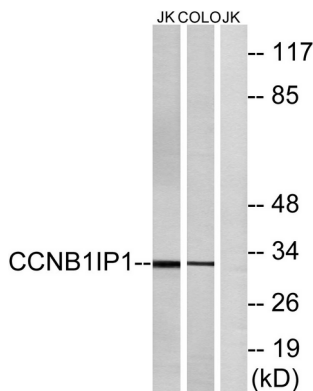
Gene Name	CCNB1IP1
Alternative Names	CCNB1IP1; C14orf18; HEI10; E3 ubiquitin-protein ligase CCNB1IP1; Cyclin-B1-interacting protein 1; Human enhancer of invasion 10
Gene ID	57820.0
SwissProt ID	Q9NPC3
Immunogen	The antiserum was produced against synthesized peptide derived from human CCNB1IP1. AA range:201-250

Background

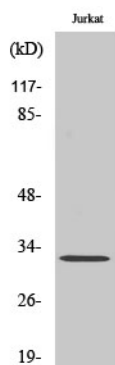
HEI10 is a member of the E3 ubiquitin ligase family and functions in progression of the cell cycle through G(2)/M.[supplied by OMIM, Apr 2004],function:E3 ubiquitin-protein ligase. Modulates cyclin B levels and participates in the regulation of cell cycle progression through the G2 phase. Overexpression causes delayed entry into mitosis.,pathway:Protein modification; protein ubiquitination.,PTM:Phosphorylated by CDC2 on serine or threonine residues (in vitro),.PTM:Ubiquitinated; autoubiquitinated.,similarity:Contains 1 RING-type zinc finger.,subcellular location:May associate with segregating chromosomes during metaphase and anaphase.,subunit:Binds CCNB1 and UBE2L3.,tissue specificity:Highly expressed in heart. Detected at intermediate levels in liver and kidney, and at low levels in placenta, brain and lung.,

Research Area

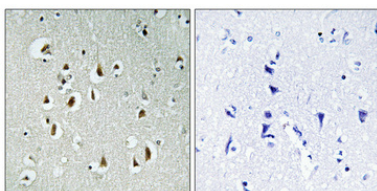
Image Data



Western blot analysis of lysates from Jurkat and COLO cells, using CCNB1IP1 Antibody. The lane on the right is blocked with the synthesized peptide.



Western Blot analysis of various cells using HEI10 Polyclonal Antibody diluted at 1:2000.



Immunohistochemical analysis of paraffin-embedded Human brain. Antibody was diluted at 1:100 (4°, overnight). High-pressure and temperature Tris-EDTA, pH 8.0 was used for antigen retrieval. Negative control (right) obtained from antibody was pre-absorbed by immunogen peptide.