

Product Name: Gα t2 Rabbit Polyclonal Antibody**Catalog #: APRab11867**

For research use only.

Summary

Description	Rabbit polyclonal Antibody
Host	Rabbit
Application	WB,IHC,ICC/IF,ELISA
Reactivity	Human,Mouse
Conjugation	Unconjugated
Modification	Unmodified
Isotype	IgG
Clonality	Polyclonal
Form	Liquid
Concentration	1mg/ml
Storage	Aliquot and store at -20°C (valid for 12 months). Avoid freeze/thaw cycles.
Shipping	Ice bags
Buffer	Liquid in PBS containing 50% glycerol, 0.5% protective protein and 0.02% New type preservative N.
Purification	Affinity purification

Application

Dilution Ratio	WB 1:500-1:2000,IHC 1:100-1:300,ICC/IF 1:50-1:200,ELISA 1:5000-1:20000
Molecular Weight	40kDa

Antigen Information

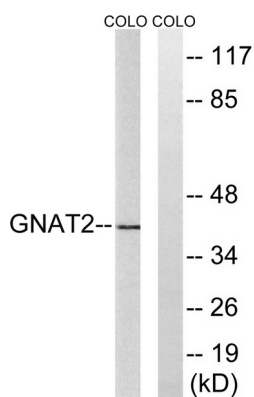
Gene Name	GNAT2
Alternative Names	GNAT2; GNATC; Guanine nucleotide-binding protein G(t) subunit alpha-2; Transducin alpha-2 chain
Gene ID	2780.0
SwissProt ID	P19087
Immunogen	The antiserum was produced against synthesized peptide derived from human GNAT2. AA range:1-50

Background

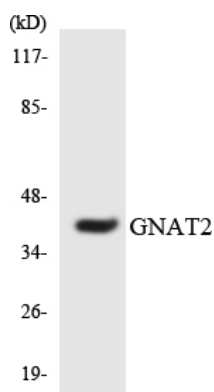
Transducin is a 3-subunit guanine nucleotide-binding protein (G protein) which stimulates the coupling of rhodopsin and cGMP-phosphodiesterase during visual impulses. The transducin alpha subunits in rods and cones are encoded by separate genes. This gene encodes the alpha subunit in cones. [provided by RefSeq, Jul 2008],disease:Defects in GNAT2 are the cause of achromatopsia type 4 (ACHM4) [MIM:139340]. Achromatopsia is an autosomal recessively inherited visual disorder that is present from birth and that features the absence of color discrimination.,function:Guanine nucleotide-binding proteins (G proteins) are involved as modulators or transducers in various transmembrane signaling systems. Transducin is an amplifier and one of the transducers of a visual impulse that performs the coupling between rhodopsin and cGMP-phosphodiesterase.,similarity:Belongs to the G-alpha family. G(i/o/t/z) subfamily.,subunit:G proteins are composed of 3 units; alpha, beta and gamma. The alpha chain contains the guanine nucleotide binding site.,tissue specificity:Retinal rod outer segment,.

Research Area

Image Data



Western blot analysis of lysates from COLO cells, using GNAT2 Antibody. The lane on the right is blocked with the synthesized peptide.



Western blot analysis of the lysates from Jurkat cells using GNAT2 antibody.