

Product Name: Gz- α Rabbit Polyclonal Antibody**Catalog #: APRab11862**

For research use only.

Summary

Description	Rabbit polyclonal Antibody
Host	Rabbit
Application	WB,IHC,ICC/IF,ELISA
Reactivity	Human,Mouse,Rat,Monkey
Conjugation	Unconjugated
Modification	Unmodified
Isotype	IgG
Clonality	Polyclonal
Form	Liquid
Concentration	1mg/ml
Storage	Aliquot and store at -20°C (valid for 12 months). Avoid freeze/thaw cycles.
Shipping	Ice bags
Buffer	Liquid in PBS containing 50% glycerol, 0.5% protective protein and 0.02% New type preservative N.
Purification	Affinity purification

Application

Dilution Ratio	WB 1:500-1:2000,IHC 1:100-1:300,ICC/IF 1:50-1:200,ELISA 1:20000-1:40000
Molecular Weight	41kDa

Antigen Information

Gene Name	GNAZ
Alternative Names	GNAZ; Guanine nucleotide-binding protein G(z) subunit alpha; G(x) alpha chain; Gz-alpha
Gene ID	2781.0
SwissProt ID	P19086
Immunogen	The antiserum was produced against synthesized peptide derived from human Gz-alpha. AA range:1-50

Background

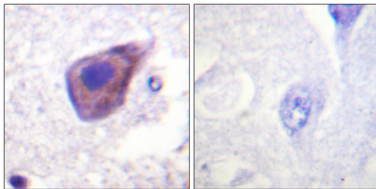
G protein subunit alpha z(GNAZ) Homo sapiens The protein encoded by this gene is a member of a G protein subfamily that

mediates signal transduction in pertussis toxin-insensitive systems. This encoded protein may play a role in maintaining the ionic balance of perilymphatic and endolymphatic cochlear fluids. [provided by RefSeq, Jul 2008], function: Guanine nucleotide-binding proteins (G proteins) are involved as modulators or transducers in various transmembrane signaling systems., similarity: Belongs to the G-alpha family. G(i/o/t/z) subfamily., subunit: G proteins are composed of 3 units; alpha, beta and gamma. The alpha chain contains the guanine nucleotide binding site.,

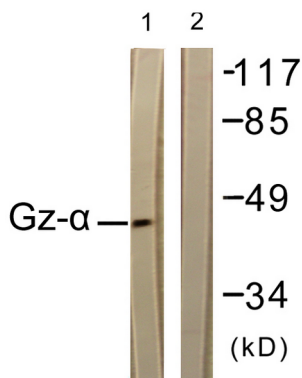
Research Area

Long-term depression;

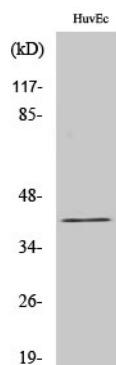
Image Data



Immunohistochemistry analysis of paraffin-embedded human brain tissue, using Gz-alpha Antibody. The picture on the right is blocked with the synthesized peptide.



Western blot analysis of lysates from COS7 cells, treated with PMA 125ng/ml 30', using Gz-alpha Antibody. The lane on the right is blocked with the synthesized peptide.



Western Blot analysis of various cells using Gz-alpha Polyclonal Antibody