

---

**Product Name: GTPBP5 Rabbit Polyclonal Antibody****Catalog #: APRab11849**

For research use only.

**Summary**

<b>Description</b>	Rabbit polyclonal Antibody
<b>Host</b>	Rabbit
<b>Application</b>	IHC,ICC/IF,ELISA
<b>Reactivity</b>	Human,Mouse,Rat
<b>Conjugation</b>	Unconjugated
<b>Modification</b>	Unmodified
<b>Isotype</b>	IgG
<b>Clonality</b>	Polyclonal
<b>Form</b>	Liquid
<b>Concentration</b>	1mg/ml
<b>Storage</b>	Aliquot and store at -20°C (valid for 12 months). Avoid freeze/thaw cycles.
<b>Shipping</b>	Ice bags
<b>Buffer</b>	Liquid in PBS containing 50% glycerol, 0.5% protective protein and 0.02% New type preservative N.
<b>Purification</b>	Affinity purification

**Application**

**Dilution Ratio** IHC 1:100-1:300,ICC/IF 1:50-1:200,ELISA 1:10000-1:20000

**Molecular Weight**

**Antigen Information**

<b>Gene Name</b>	GTPBP5
<b>Alternative Names</b>	GTPBP5; OBGH1; GTP-binding protein 5; Protein obg homolog 1; ObgH1
<b>Gene ID</b>	26164.0
<b>SwissProt ID</b>	Q9H4K7
<b>Immunogen</b>	The antiserum was produced against synthesized peptide derived from human GTPBP5. AA range:71-120

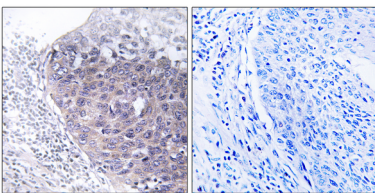
**Background**

Small G proteins, such as GTPBP5, act as molecular switches that play crucial roles in the regulation of fundamental cellular

processes such as protein synthesis, nuclear transport, membrane trafficking, and signal transduction (Hirano et al., 2006 [PubMed 17054726]).[supplied by OMIM, Mar 2008],function:Involved in the ribosome maturation process. Plays a role of GTPase in vitro. When missing, mitochondria elongation and abnormal nuclear morphology are observed.,sequence caution:Translated as Gln.,similarity:Belongs to the GTP1/OBG family.,

## Research Area

## Image Data



Immunohistochemistry analysis of paraffin-embedded human cervix carcinoma tissue, using GTPBP5 Antibody. The picture on the right is blocked with the synthesized peptide.