

---

**Product Name: GSK3 $\alpha$ / $\beta$  Rabbit Polyclonal Antibody****Catalog #: APRab11823**

For research use only.

**Summary**

<b>Description</b>	Rabbit polyclonal Antibody
<b>Host</b>	Rabbit
<b>Application</b>	WB,IHC,ICC/IF,ELISA
<b>Reactivity</b>	Human,Mouse,Rat,Other,Other
<b>Conjugation</b>	Unconjugated
<b>Modification</b>	Unmodified
<b>Isotype</b>	IgG
<b>Clonality</b>	Polyclonal
<b>Form</b>	Liquid
<b>Concentration</b>	1mg/ml
<b>Storage</b>	Aliquot and store at -20°C (valid for 12 months). Avoid freeze/thaw cycles.
<b>Shipping</b>	Ice bags
<b>Buffer</b>	Liquid in PBS containing 50% glycerol, 0.5% protective protein and 0.02% New type preservative N.
<b>Purification</b>	Affinity purification

**Application**

<b>Dilution Ratio</b>	WB 1:500-1:2000,IHC 1:100-1:300,ICC/IF 1:50-1:200,ELISA 1:10000-1:20000
<b>Molecular Weight</b>	51,46kDa

**Antigen Information**

<b>Gene Name</b>	GSK3A/GSK3B GSK3A; Glycogen synthase kinase-3 alpha; GSK-3 alpha; Serine/threonine-protein kinase
<b>Alternative Names</b>	GSK3A; GSK3B; Glycogen synthase kinase-3 beta; GSK-3 beta; Serine/threonine-protein kinase GSK3B
<b>Gene ID</b>	2931.0
<b>SwissProt ID</b>	P49840/P49841
<b>Immunogen</b>	The antiserum was produced against synthesized peptide derived from human GSK3 alpha/beta. AA range:246-295

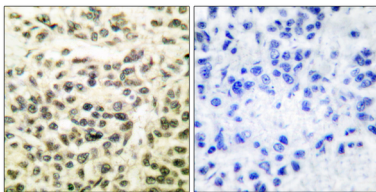
## Background

glycogen synthase kinase 3 alpha(GSK3A) Homo sapiens This gene encodes a multifunctional Ser/Thr protein kinase that is implicated in the control of several regulatory proteins including glycogen synthase, and transcription factors, such as JUN. It also plays a role in the WNT and PI3K signaling pathways, as well as regulates the production of beta-amyloid peptides associated with Alzheimer's disease. [provided by RefSeq, Oct 2011],catalytic activity:ATP + [tau protein] = ADP + [tau protein] phosphate.,function:Implicated in the hormonal control of several regulatory proteins including glycogen synthase, MYB and the transcription factor JUN.,similarity:Belongs to the protein kinase superfamily.,similarity:Belongs to the protein kinase superfamily. CMGC Ser/Thr protein kinase family. GSK-3 subfamily.,similarity:Contains 1 protein kinase domain.,subunit:Monomer.,

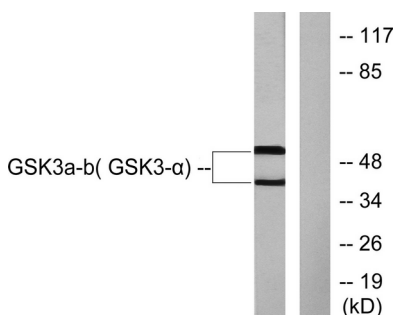
## Research Area

Chemokine;

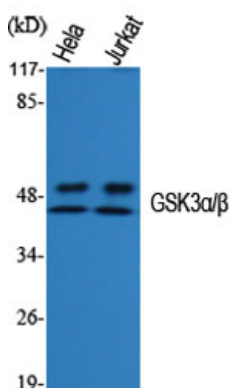
## Image Data



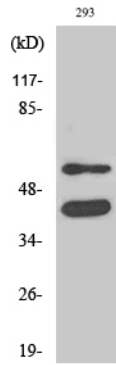
Immunohistochemistry analysis of paraffin-embedded human breast carcinoma tissue, using GSK3 alpha/beta Antibody. The picture on the right is blocked with the synthesized peptide.



Western blot analysis of lysates from 293 cells, treated with TNF-a 20ng/ml 30', using GSK3 alpha/beta Antibody. The lane on the right is blocked with the synthesized peptide.



Western Blot analysis of various cells using GSK3 $\alpha/\beta$  Polyclonal Antibody diluted at 1: 1000



Western Blot analysis of 293 cells using GSK3 $\alpha/\beta$  Polyclonal Antibody diluted at 1:1000