

---

**Product Name: GRTP1 Rabbit Polyclonal Antibody****Catalog #: APRab11805**

For research use only.

**Summary**

<b>Description</b>	Rabbit polyclonal Antibody
<b>Host</b>	Rabbit
<b>Application</b>	WB,IHC,ICC/IF,ELISA
<b>Reactivity</b>	Human,Rat,Mouse
<b>Conjugation</b>	Unconjugated
<b>Modification</b>	Unmodified
<b>Isotype</b>	IgG
<b>Clonality</b>	Polyclonal
<b>Form</b>	Liquid
<b>Concentration</b>	1mg/ml
<b>Storage</b>	Aliquot and store at -20°C (valid for 12 months). Avoid freeze/thaw cycles.
<b>Shipping</b>	Ice bags
<b>Buffer</b>	Liquid in PBS containing 50% glycerol, 0.5% protective protein and 0.02% New type preservative N.
<b>Purification</b>	Affinity purification

**Application**

<b>Dilution Ratio</b>	WB 1:500-1:2000,IHC 1:100-1:300,ICC/IF 1:50-1:200,ELISA 1:20000-1:40000
<b>Molecular Weight</b>	35kDa

**Antigen Information**

<b>Gene Name</b>	GRTP1
<b>Alternative Names</b>	GRTP1; TBC1D6; Growth hormone-regulated TBC protein 1; TBC1 domain family member 6
<b>Gene ID</b>	79774.0
<b>SwissProt ID</b>	Q5TC63
<b>Immunogen</b>	The antiserum was produced against synthesized peptide derived from human GRTP1. AA range:71-120

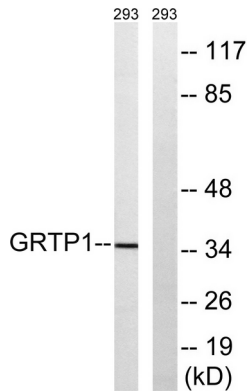
**Background**

function:May act as a GTPase-activating protein for Rab family protein(s).,similarity:Contains 1 Rab-GAP TBC

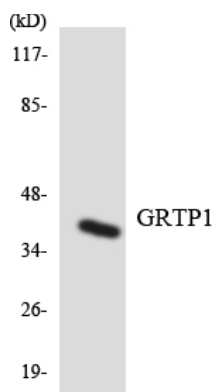
domain.,function:May act as a GTPase-activating protein for Rab family protein(s).,similarity:Contains 1 Rab-GAP TBC domain.,

## Research Area

## Image Data



Western blot analysis of lysates from 293 cells, using GRTP1 Antibody. The lane on the right is blocked with the synthesized peptide.



Western blot analysis of the lysates from Jurkat cells using GRTP1 antibody.



Western Blot analysis of various cells using GRTP1 Polyclonal Antibody