
Product Name: GRK 6 Rabbit Polyclonal Antibody**Catalog #: APRab11777**

For research use only.

Summary

Description	Rabbit polyclonal Antibody
Host	Rabbit
Application	WB,ICC/IF,ELISA
Reactivity	Human,Mouse,Rat
Conjugation	Unconjugated
Modification	Unmodified
Isotype	IgG
Clonality	Polyclonal
Form	Liquid
Concentration	1mg/ml
Storage	Aliquot and store at -20°C (valid for 12 months). Avoid freeze/thaw cycles.
Shipping	Ice bags
Buffer	Liquid in PBS containing 50% glycerol, 0.5% protective protein and 0.02% New type preservative N.
Purification	Affinity purification

Application

Dilution Ratio	WB 1:500-1:2000,ICC/IF 1:200-1:1000,ELISA 1:5000-1:20000
Molecular Weight	65kDa

Antigen Information

Gene Name	GRK6
Alternative Names	GRK6; GPRK6; G protein-coupled receptor kinase 6; G protein-coupled receptor kinase GRK6
Gene ID	2870.0
SwissProt ID	P43250
Immunogen	The antiserum was produced against synthesized peptide derived from human GRK6. AA range:10-59

Background

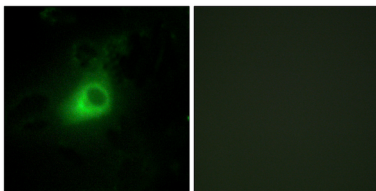
This gene encodes a member of the guanine nucleotide-binding protein (G protein)-coupled receptor kinase subfamily of the

Ser/Thr protein kinase family. The protein phosphorylates the activated forms of G protein-coupled receptors thus initiating their deactivation. Several transcript variants encoding different isoforms have been described for this gene. [provided by RefSeq, Jul 2008],catalytic activity:ATP + [G-protein-coupled receptor] = ADP + [G-protein-coupled receptor] phosphate.,function:Specifically phosphorylates the activated forms of G protein-coupled receptors.,PTM:It is uncertain whether palmitoylation is on Cys-561 and/or Cys-562 and/or Cys-565.,similarity:Belongs to the protein kinase superfamily.,similarity:Belongs to the protein kinase superfamily. AGC Ser/Thr protein kinase family. GPRK subfamily.,similarity:Contains 1 AGC-kinase C-terminal domain.,similarity:Contains 1 protein kinase domain.,similarity:Contains 1 RGS domain.,tissue specificity:Widely expressed.,

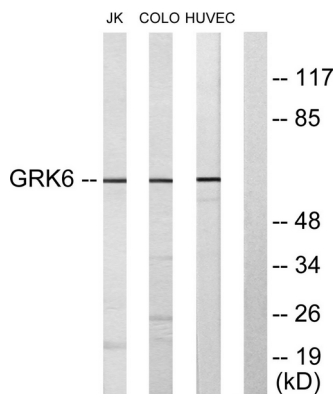
Research Area

Chemokine;Endocytosis;

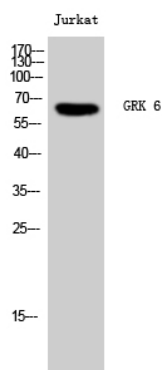
Image Data



Immunofluorescence analysis of HeLa cells, using GRK6 Antibody. The picture on the right is blocked with the synthesized peptide.



Western blot analysis of lysates from Jurkat, COLO205, and HUVEC cells, using GRK6 Antibody. The lane on the right is blocked with the synthesized peptide.



Western Blot analysis of Jurkat cells using GRK 6 Polyclonal Antibody