

---

**Product Name: GRIN2D Rabbit Polyclonal Antibody****Catalog #: APRab11767**

For research use only.

**Summary**

<b>Description</b>	Rabbit polyclonal Antibody
<b>Host</b>	Rabbit
<b>Application</b>	WB,ELISA
<b>Reactivity</b>	Human,Mouse,Rat
<b>Conjugation</b>	Unconjugated
<b>Modification</b>	Unmodified
<b>Isotype</b>	IgG
<b>Clonality</b>	Polyclonal
<b>Form</b>	Liquid
<b>Concentration</b>	1mg/ml
<b>Storage</b>	Aliquot and store at -20°C (valid for 12 months). Avoid freeze/thaw cycles.
<b>Shipping</b>	Ice bags
<b>Buffer</b>	Liquid in PBS containing 50% glycerol, 0.5% protective protein and 0.02% New type preservative N.
<b>Purification</b>	Affinity purification

**Application**

<b>Dilution Ratio</b>	WB 1:500-1:2000,ELISA 1:10000-1:20000
<b>Molecular Weight</b>	145kDa

**Antigen Information**

<b>Gene Name</b>	GRIN2D GluN2D NMDAR2D
<b>Alternative Names</b>	Glutamate [NMDA] receptor subunit epsilon-4 (EB11) (N-methyl D-aspartate receptor subtype 2D) (NMDAR2D) (NR2D)
<b>Gene ID</b>	2906.0
<b>SwissProt ID</b>	O15399
<b>Immunogen</b>	Synthesized peptide derived from human GRIN2D Polyclonal

**Background**

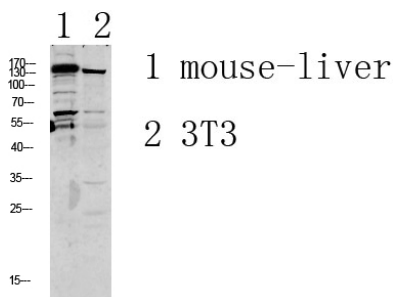
N-methyl-D-aspartate (NMDA) receptors are a class of ionotropic glutamate receptors. NMDA channel has been shown to be

involved in long-term potentiation, an activity-dependent increase in the efficiency of synaptic transmission thought to underlie certain kinds of memory and learning. NMDA receptor channels are heteromers composed of the key receptor subunit NMDAR1 (GRIN1) and 1 or more of the 4 NMDAR2 subunits: NMDAR2A (GRIN2A), NMDAR2B (GRIN2B), NMDAR2C (GRIN2C), and NMDAR2D (GRIN2D). [provided by RefSeq, Mar 2010],function:NMDA receptor subtype of glutamate-gated ion channels with high calcium permeability and voltage-dependent sensitivity to magnesium. Mediated by glycine.,similarity:Belongs to the glutamate-gated ion channel (TC 1.A.10) family.,subunit:Interacts with PDZ domains of INADL and DLG4 (By similarity). Forms heteromeric channel of a zeta subunit (GRIN1), a epsilon subunit (GRIN2A, GRIN2B, GRIN2C or GRIN2D) and a third subunit (GRIN3A or GRIN3B),,

## Research Area

Calcium;Neuroactive ligand-receptor interaction;Long-term potentiation;Alzheimer's disease;Amyotrophic lateral sclerosis (ALS);

## Image Data



Western blot analysis of various lysate, antibody was diluted at 1000. Secondary antibody was diluted at 1:20000