

---

**Product Name: GRIN2 Rabbit Polyclonal Antibody****Catalog #: APRab11766**

For research use only.

**Summary**

<b>Description</b>	Rabbit polyclonal Antibody
<b>Host</b>	Rabbit
<b>Application</b>	WB,IHC,ICC/IF,ELISA
<b>Reactivity</b>	Human,Rat,Mouse
<b>Conjugation</b>	Unconjugated
<b>Modification</b>	Unmodified
<b>Isotype</b>	IgG
<b>Clonality</b>	Polyclonal
<b>Form</b>	Liquid
<b>Concentration</b>	1mg/ml
<b>Storage</b>	Aliquot and store at -20°C (valid for 12 months). Avoid freeze/thaw cycles.
<b>Shipping</b>	Ice bags
<b>Buffer</b>	Liquid in PBS containing 50% glycerol, 0.5% protective protein and 0.02% New type preservative N.
<b>Purification</b>	Affinity purification

**Application**

<b>Dilution Ratio</b>	WB 1:500-1:2000,IHC 1:100-1:300,ICC/IF 1:50-1:200,ELISA 1:20000-1:40000
<b>Molecular Weight</b>	47kDa

**Antigen Information**

<b>Gene Name</b>	GPRIN2
<b>Alternative Names</b>	GPRIN2; KIAA0514; G protein-regulated inducer of neurite outgrowth 2; GRIN2
<b>Gene ID</b>	9721.0
<b>SwissProt ID</b>	O60269
<b>Immunogen</b>	The antiserum was produced against synthesized peptide derived from human GPRIN2. AA range:11-60

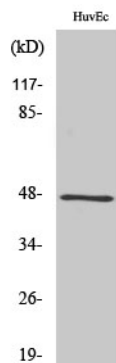
**Background**

function:May be involved in neurite outgrowth.,subunit:Interacts with activated forms of GNAO1 and GNAZ.,tissue

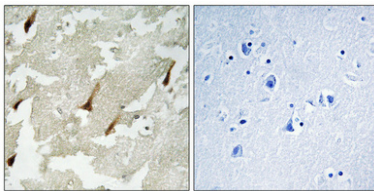
specificity:Expressed specifically in the cerebellum.,function:May be involved in neurite outgrowth.,subunit:Interacts with activated forms of GNAO1 and GNAZ.,tissue specificity:Expressed specifically in the cerebellum.,

## Research Area

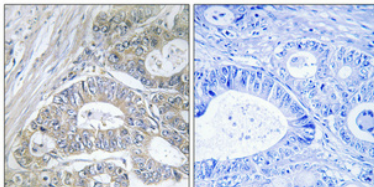
## Image Data



Western Blot analysis of various cells using GRIN2 Polyclonal Antibody



Immunohistochemical analysis of paraffin-embedded Human brain. Antibody was diluted at 1:100 (4°,overnight) . High-pressure and temperature Tris-EDTA,pH8.0 was used for antigen retrieval. Negative contrl (right) obtaned from antibody was pre-absorbed by immunogen peptide.



Immunohistochemical analysis of paraffin-embedded Human colon cancer. Antibody was diluted at 1:100 (4°,overnight) . High-pressure and temperature Tris-EDTA,pH8.0 was used for antigen retrieval. Negative contrl (right) obtaned from antibody was pre-absorbed by immunogen peptide.