

Product Name: GRIN1 Rabbit Polyclonal Antibody**Catalog #: APRab11765**

For research use only.

Summary

Description	Rabbit polyclonal Antibody
Host	Rabbit
Application	WB,ELISA
Reactivity	Human,Rat,Mouse
Conjugation	Unconjugated
Modification	Unmodified
Isotype	IgG
Clonality	Polyclonal
Form	Liquid
Concentration	1mg/ml
Storage	Aliquot and store at -20°C (valid for 12 months). Avoid freeze/thaw cycles.
Shipping	Ice bags
Buffer	Liquid in PBS containing 50% glycerol, 0.5% protective protein and 0.02% New type preservative N.
Purification	Affinity purification

Application

Dilution Ratio	WB 1:500-1:2000,ELISA 1:20000-1:40000
Molecular Weight	102kDa

Antigen Information

Gene Name	GPRIN1
Alternative Names	GPRIN1; KIAA1893; G protein-regulated inducer of neurite outgrowth 1; GRIN1
Gene ID	114787.0
SwissProt ID	Q7Z2K8
Immunogen	The antiserum was produced against synthesized peptide derived from human GPRIN1. AA range:231-280

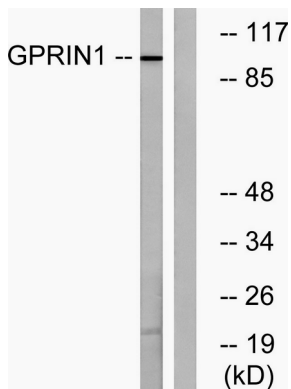
Background

function:May be involved in neurite outgrowth.,PTM:Palmitoylation on Cys-999 and/or Cys-1000 is required for membrane

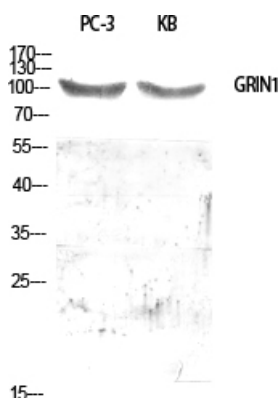
targeting.,subcellular location:Highly enriched in growth cone.,subunit:Interacts with activated forms of GNAI1, GNAO1 and GNAZ.,tissue specificity:Widely expressed in the central nervous system, with highest levels in spinal cord.,function:May be involved in neurite outgrowth.,PTM:Palmitoylation on Cys-999 and/or Cys-1000 is required for membrane targeting.,subcellular location:Highly enriched in growth cone.,subunit:Interacts with activated forms of GNAI1, GNAO1 and GNAZ.,tissue specificity:Widely expressed in the central nervous system, with highest levels in spinal cord.,

Research Area

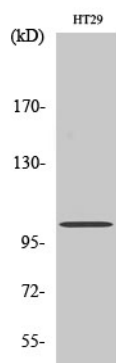
Image Data



Western blot analysis of lysates from HT-29 cells, using GPRIN1 Antibody. The lane on the right is blocked with the synthesized peptide.



Western Blot analysis of various cells using GRIN1 Polyclonal Antibody diluted at 1:500



Western Blot analysis of HT29 cells using GRIN1 Polyclonal Antibody diluted at 1:500