

**Product Name: GRIF-1 Rabbit Polyclonal Antibody****Catalog #: APRab11760**

For research use only.

**Summary**

<b>Description</b>	Rabbit polyclonal Antibody
<b>Host</b>	Rabbit
<b>Application</b>	IHC, ICC/IF, ELISA
<b>Reactivity</b>	Human, Rat, Mouse
<b>Conjugation</b>	Unconjugated
<b>Modification</b>	Unmodified
<b>Isotype</b>	IgG
<b>Clonality</b>	Polyclonal
<b>Form</b>	Liquid
<b>Concentration</b>	1mg/ml
<b>Storage</b>	Aliquot and store at -20°C (valid for 12 months). Avoid freeze/thaw cycles.
<b>Shipping</b>	Ice bags
<b>Buffer</b>	Liquid in PBS containing 50% glycerol, 0.5% protective protein and 0.02% New type preservative N.
<b>Purification</b>	Affinity purification

**Application**

**Dilution Ratio** IHC 1:100-1:300, ICC/IF 1:50-1:200, ELISA 1:5000-1:20000

**Molecular Weight**

**Antigen Information**

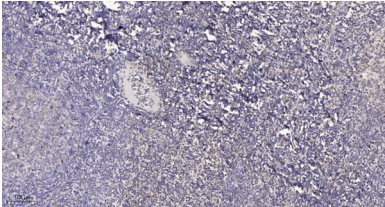
<b>Gene Name</b>	TRAK2
<b>Alternative Names</b>	TRAK2; ALS2CR3; KIAA0549; Trafficking kinesin-binding protein 2; Amyotrophic lateral sclerosis 2 chromosomal region candidate gene 3 protein
<b>Gene ID</b>	66008.0
<b>SwissProt ID</b>	O60296
<b>Immunogen</b>	The antiserum was produced against synthesized peptide derived from human TRAK2. AA range:430-480

**Background**

PTM:O-glycosylated.,similarity:Contains 1 HAP1 N-terminal domain.,subunit:Interacts with GABA-A receptor and O-GlcNAc transferase (By similarity). Interacts with RHOT1/Miro-1 and RHOT2/Miro-2.,tissue specificity:Widely expressed, with highest expression in heart.,PTM:O-glycosylated.,similarity:Contains 1 HAP1 N-terminal domain.,subunit:Interacts with GABA-A receptor and O-GlcNAc transferase (By similarity). Interacts with RHOT1/Miro-1 and RHOT2/Miro-2.,tissue specificity:Widely expressed, with highest expression in heart.,

## Research Area

## Image Data



Immunohistochemical analysis of paraffin-embedded human tonsil. 1, Antibody was diluted at 1:200 (4° overnight) . 2, Tris-EDTA,pH9.0 was used for antigen retrieval. 3,Secondary antibody was diluted at 1:200 (room temperature, 30min) .