
Product Name: Gremlin-2 Rabbit Polyclonal Antibody**Catalog #: APRab11757**

For research use only.

Summary

Description	Rabbit polyclonal Antibody
Host	Rabbit
Application	WB,IHC,ICC/IF,ELISA
Reactivity	Human,Mouse
Conjugation	Unconjugated
Modification	Unmodified
Isotype	IgG
Clonality	Polyclonal
Form	Liquid
Concentration	1mg/ml
Storage	Aliquot and store at -20°C (valid for 12 months). Avoid freeze/thaw cycles.
Shipping	Ice bags
Buffer	Liquid in PBS containing 50% glycerol, 0.5% protective protein and 0.02% New type preservative N.
Purification	Affinity purification

Application

Dilution Ratio	WB 1:500-1:2000,IHC 1:50-1:200,ICC/IF 1:50-1:200,ELISA 1:10000-1:20000
Molecular Weight	19kDa

Antigen Information

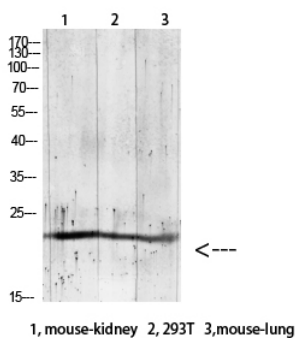
Gene Name	GREM2
Alternative Names	Gremlin-2 (Cysteine knot superfamily 1, BMP antagonist 2;DAN domain family member 3;Protein related to DAN and cerberus)
Gene ID	64388.0
SwissProt ID	Q9H772
Immunogen	The antiserum was produced against synthesized peptide derived from the Internal region of human GREM2. AA range:71-120

Background

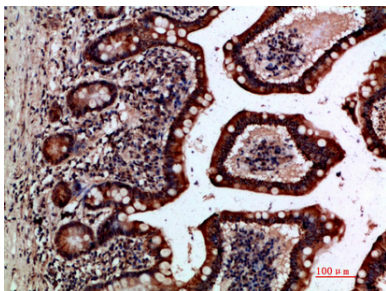
This gene encodes a member of the BMP (bone morphogenic protein) antagonist family. Like BMPs, BMP antagonists contain cystine knots and typically form homo- and heterodimers. The CAN (cerberus and dan) subfamily of BMP antagonists, to which this gene belongs, is characterized by a C-terminal cystine knot with an eight-membered ring. The antagonistic effect of the secreted glycosylated protein encoded by this gene is likely due to its direct binding to BMP proteins. As an antagonist of BMP, this gene may play a role in regulating organogenesis, body patterning, and tissue differentiation. [provided by RefSeq, Jul 2008],function:Cytokine that inhibits the activity of BMP2 and BMP4 in a dose-dependent manner. Antagonized BMP4-induced suppression of progesterone production in granulosa cells.,similarity:Belongs to the DAN family.,similarity:Contains 1 CTCK (C-terminal cystine knot-like) domain.,subunit:Interacts with BMP2 and BMP4.,

Research Area

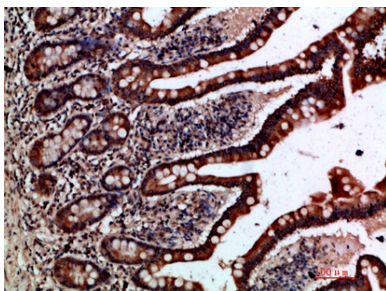
Image Data



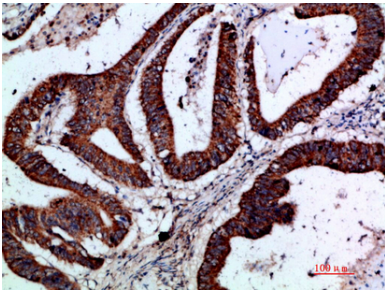
Western blot analysis of RAT-brain lysate, antibody was diluted at 1000. Secondary antibody was diluted at 1:20000



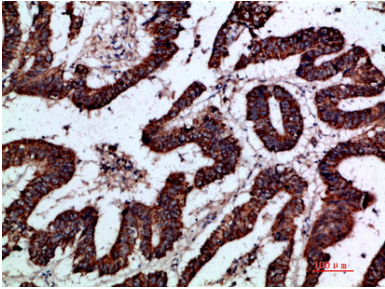
Immunohistochemical analysis of paraffin-embedded human-small-intestine, antibody was diluted at 1:200



Immunohistochemical analysis of paraffin-embedded human-small-intestine, antibody was diluted at 1:200



Immunohistochemical analysis of paraffin-embedded human-colon-cancer, antibody was diluted at 1:200



Immunohistochemical analysis of paraffin-embedded human-colon-cancer, antibody was diluted at 1:200