

---

**Product Name: GRB7 Rabbit Polyclonal Antibody****Catalog #: APRab11754**

For research use only.

**Summary**

<b>Description</b>	Rabbit polyclonal Antibody
<b>Host</b>	Rabbit
<b>Application</b>	IHC,ICC/IF,ELISA
<b>Reactivity</b>	Human,Mouse,Rat
<b>Conjugation</b>	Unconjugated
<b>Modification</b>	Unmodified
<b>Isotype</b>	IgG
<b>Clonality</b>	Polyclonal
<b>Form</b>	Liquid
<b>Concentration</b>	1mg/ml
<b>Storage</b>	Aliquot and store at -20°C (valid for 12 months). Avoid freeze/thaw cycles.
<b>Shipping</b>	Ice bags
<b>Buffer</b>	Liquid in PBS containing 50% glycerol, 0.5% protective protein and 0.02% New type preservative N.
<b>Purification</b>	Affinity purification

**Application**

**Dilution Ratio** IHC 1:50-1:200,ICC/IF 1:50-1:200,ELISA 1:10000-1:20000

**Molecular Weight**

**Antigen Information**

<b>Gene Name</b>	GRB7
<b>Alternative Names</b>	Growth factor receptor-bound protein 7 (B47;Epidermal growth factor receptor GRB-7;GRB7 adapter protein)
<b>Gene ID</b>	2886.0
<b>SwissProt ID</b>	Q14451
<b>Immunogen</b>	Synthetic peptide from human protein at AA range: 30-100

**Background**

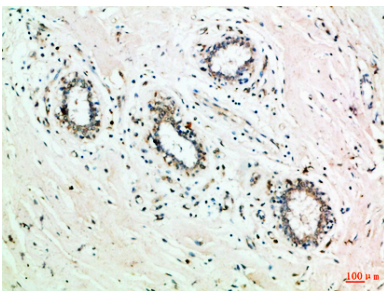
The product of this gene belongs to a small family of adapter proteins that are known to interact with a number of receptor

tyrosine kinases and signaling molecules. This gene encodes a growth factor receptor-binding protein that interacts with epidermal growth factor receptor (EGFR) and ephrin receptors. The protein plays a role in the integrin signaling pathway and cell migration by binding with focal adhesion kinase (FAK). Several transcript variants encoding two different isoforms have been found for this gene. [provided by RefSeq, Jun 2011],alternative products:At least 2 isoforms are produced,function:Interacts with the cytoplasmic domain of the epidermal growth factor receptor which is then inhibited. The interaction is mediated by the SH2 domain. Also binds to ERBB2.,PTM:Phosphorylated on tyrosine residues.,similarity:Belongs to the GRB7/10/14 family.,similarity:Contains 1 PH domain.,similarity:Contains 1 Ras-associating domain.,similarity:Contains 1 SH2 domain.,subunit:Interacts with RND1.,

## Research Area

Signal Transduction

## Image Data



Immunohistochemical analysis of paraffin-embedded Human-breast, antibody was diluted at 1:100