

Product Name: GRASP55 Rabbit Polyclonal Antibody**Catalog #: APRab11747**

For research use only.

Summary

Description	Rabbit polyclonal Antibody
Host	Rabbit
Application	WB,IHC,ICC/IF,ELISA
Reactivity	Human,Mouse,Rat
Conjugation	Unconjugated
Modification	Unmodified
Isotype	IgG
Clonality	Polyclonal
Form	Liquid
Concentration	1mg/ml
Storage	Aliquot and store at -20°C (valid for 12 months). Avoid freeze/thaw cycles.
Shipping	Ice bags
Buffer	Liquid in PBS containing 50% glycerol, 0.5% protective protein and 0.02% New type preservative N.
Purification	Affinity purification

Application

Dilution Ratio	WB 1:500-1:2000,IHC 1:100-1:300,ICC/IF 1:50-1:200,ELISA 1:20000-1:40000
Molecular Weight	47kDa

Antigen Information

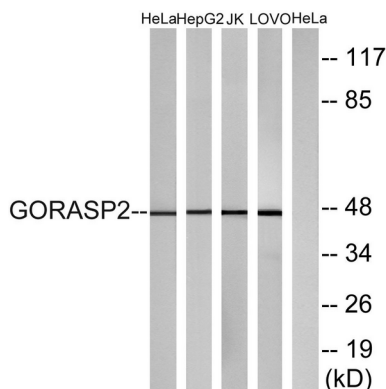
Gene Name	GORASP2
Alternative Names	GORASP2; GOLPH6; Golgi reassembly-stacking protein 2; GRS2; Golgi phosphoprotein 6; GOLPH6; Golgi reassembly-stacking protein of 55 kDa; GRASP55; p59
Gene ID	26003.0
SwissProt ID	Q9H8Y8
Immunogen	The antiserum was produced against synthesized peptide derived from human GORASP2. AA range:181-230

Background

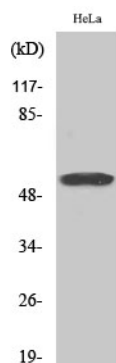
This gene encodes a member of the Golgi reassembly stacking protein family. These proteins may play a role in the stacking of Golgi cisternae and Golgi ribbon formation, as well as Golgi fragmentation during apoptosis or mitosis. The encoded protein also plays a role in the intracellular transport of transforming growth factor alpha and may function as a molecular chaperone. A pseudogene of this gene is located on the short arm of chromosome 2. Alternatively spliced transcript variants encoding multiple isoforms have been observed for this gene. [provided by RefSeq, Jan 2011],function:May be involved in assembly and membrane stacking of the Golgi cisternae, and in the process by which Golgi stacks reform after mitotic breakdown. May regulate the intracellular transport and presentation of a defined set of transmembrane proteins, such as transmembrane Tgfa.,PTM:Myristoylated. Myristoylation is essential for the Golgi targeting.,PTM:Palmitoylated.,PTM:Phosphorylated in mitotic cells.,similarity:Belongs to the GORASP family.,similarity:Contains 1 PDZ (DHR) domain.,subunit:Forms a RAB2 effector complex with BLZF1/Golgin 45 in the medial Golgi. Interacts with members of the p24 cargo receptors. Interacts with CNIH and the cytoplasmic domain of transmembrane TGFA, prior its transit in the trans-Golgi. Does not interact with GM130.,

Research Area

Image Data



Western blot analysis of lysates from HeLa, HepG2, Jurkat, and LOVO cells, using GORASP2 Antibody. The lane on the right is blocked with the synthesized peptide.



Western Blot analysis of various cells using GRASP55 Polyclonal Antibody