

Product Name: Grap Rabbit Polyclonal Antibody**Catalog #: APRab11745**

For research use only.

Summary

Description	Rabbit polyclonal Antibody
Host	Rabbit
Application	WB,IHC,ICC/IF,ELISA
Reactivity	Human,Mouse,Rat
Conjugation	Unconjugated
Modification	Unmodified
Isotype	IgG
Clonality	Polyclonal
Form	Liquid
Concentration	1mg/ml
Storage	Aliquot and store at -20°C (valid for 12 months). Avoid freeze/thaw cycles.
Shipping	Ice bags
Buffer	Liquid in PBS containing 50% glycerol, 0.5% protective protein and 0.02% New type preservative N.
Purification	Affinity purification

Application

Dilution Ratio	WB 1:500-1:2000,IHC 1:100-1:300,ICC/IF 1:50-1:200,ELISA 1:10000-1:20000
Molecular Weight	28kDa

Antigen Information

Gene Name	GRAP
Alternative Names	GRAP; GRB2-related adapter protein
Gene ID	10750.0
SwissProt ID	Q13588
Immunogen	The antiserum was produced against synthesized peptide derived from human GRAP. AA range:1-50

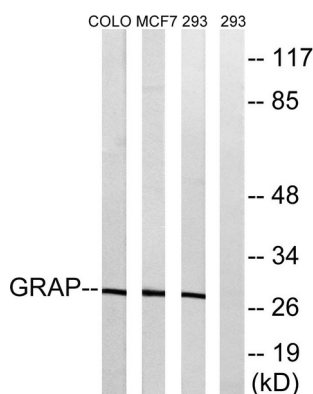
Background

This gene encodes a member of the GRB2/Sem5/Drk family and functions as a cytoplasmic signaling protein which contains an

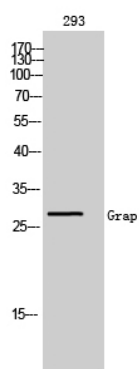
SH2 domain flanked by two SH3 domains. The SH2 domain interacts with ligand-activated receptors for stem cell factor and erythropoietin, and facilitates the formation of a stable complex with the BCR-ABL oncoprotein. This protein also associates with the Ras guanine nucleotide exchange factor SOS1 (son of sevenless homolog 1) through its N-terminal SH3 domain. In general, it couples signals from receptor and cytoplasmic tyrosine kinases to the Ras signaling pathway. [provided by RefSeq, Jul 2012],function:Couples signals from receptor and cytoplasmic tyrosine kinases to the Ras signaling pathway.,similarity:Belongs to the GRB2/sem-5/DRK family.,similarity:Contains 1 SH2 domain.,similarity:Contains 2 SH3 domains.,subunit:Associates through its SH2 domain with ligand-activated receptors for stem cell factor (KIT) and erythropoietin (EPOR). Also forms a stable complex with the Bcr-Abl oncoprotein. GRAP is associated with the Ras guanine nucleotide exchange factor SOS1, primarily through its N-terminal SH3 domain. Interacts with phosphorylated LAT upon TCR activation. Interacts with SHB,

Research Area

Image Data



Western blot analysis of lysates from 293, MCF-7, COLO cells, using GRAP Antibody. The lane on the right is blocked with the synthesized peptide.



Western Blot analysis of 293 cells using Grap Polyclonal Antibody