

---

**Product Name: GPRC6A Rabbit Polyclonal Antibody****Catalog #: APRab11716**

For research use only.

**Summary**

<b>Description</b>	Rabbit polyclonal Antibody
<b>Host</b>	Rabbit
<b>Application</b>	WB,ICC/IF,ELISA
<b>Reactivity</b>	Human,Rat,Mouse
<b>Conjugation</b>	Unconjugated
<b>Modification</b>	Unmodified
<b>Isotype</b>	IgG
<b>Clonality</b>	Polyclonal
<b>Form</b>	Liquid
<b>Concentration</b>	1mg/ml
<b>Storage</b>	Aliquot and store at -20°C (valid for 12 months). Avoid freeze/thaw cycles.
<b>Shipping</b>	Ice bags
<b>Buffer</b>	Liquid in PBS containing 50% glycerol, 0.5% protective protein and 0.02% New type preservative N.
<b>Purification</b>	Affinity purification

**Application**

<b>Dilution Ratio</b>	WB 1:500-1:2000,ICC/IF 1:200-1:1000,ELISA 1:5000-1:10000
<b>Molecular Weight</b>	105kDa

**Antigen Information**

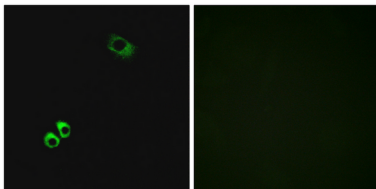
<b>Gene Name</b>	GPRC6A
<b>Alternative Names</b>	GPRC6A; G-protein coupled receptor family C group 6 member A; hGPRC6A; G-protein coupled receptor GPCR33; hGPCR33
<b>Gene ID</b>	222545.0
<b>SwissProt ID</b>	Q5T6X5
<b>Immunogen</b>	The antiserum was produced against synthesized peptide derived from human GPRC6A. AA range:471-520

**Background**

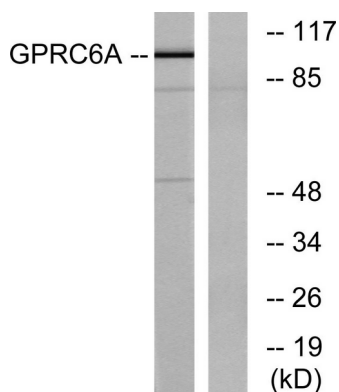
Members of family C of the G protein-coupled receptor (GPCR) superfamily, such as GPRC6A, are characterized by an evolutionarily conserved amino acid-sensing motif linked to an intramembranous 7-transmembrane loop region. Several members of GPCR family C, including GPRC6A, also have a long N-terminal domain (summary by Pi et al., 2005 [PubMed 16199532]).[supplied by OMIM, Nov 2010],function:Receptor that is activated by both amino acids and extracellular concentration of calcium ions. The activity of this receptor is mediated by a G-protein that activates a phosphatidylinositol-calcium second messenger system. Senses changes in the extracellular concentration of calcium ions, suggesting that it may mediate extracellular calcium-sensing responses in osteoblasts. Osteocalcin, stimulates its activity in presence of calcium. Has a lower affinity for calcium than CASR. Also acts as a receptor for amino acids, with a preference for basic amino acids such as L-Lys, L-Arg and L-ornithine. Its affinity for amino acids suggests that it may act as a regulatory component of the urea cycle.,PTM:N-glycosylated.,similarity:Belongs to the G-protein coupled receptor 3 family.,subunit:Homodimer; disulfide-linked.,tissue specificity:Widely expressed. Expressed at high level in brain, skeletal muscle, testis, bone, calvaria, osteoblasts and leukocytes. Expressed at intermediate level in liver, heart, kidney and spleen. Expressed at low level in lung, pancreas, placenta and ovary. Not expressed in thymus, prostate, small intestine, tongue and colon. In kidney, isoform 1 and isoform 2 are expressed at the same level, while in other tissues, isoform 2 is expressed at low level.,

## Research Area

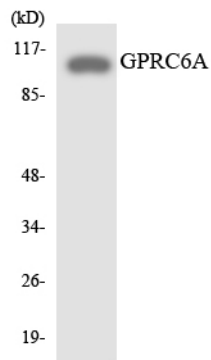
## Image Data



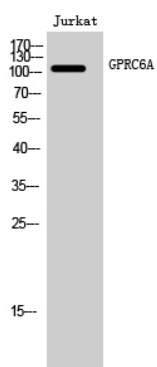
Immunofluorescence analysis of MCF7 cells, using GPRC6A Antibody. The picture on the right is blocked with the synthesized peptide.



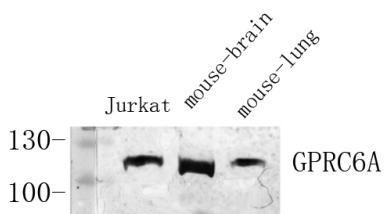
Western blot analysis of lysates from Jurkat cells, using GPRC6A Antibody. The lane on the right is blocked with the synthesized peptide.



Western blot analysis of the lysates from HeLa cells using GPRC6A antibody.



Western Blot analysis of Jurkat cells using GPRC6A Polyclonal Antibody diluted at 1 : 1000



Western Blot analysis of various cells using Antibody diluted at 1:1000. Secondary antibody was diluted at 1:20000