

Product Name: GPR87 Rabbit Polyclonal Antibody**Catalog #: APRab11705**

For research use only.

Summary

Description	Rabbit polyclonal Antibody
Host	Rabbit
Application	WB,ICC/IF,ELISA
Reactivity	Human,Mouse
Conjugation	Unconjugated
Modification	Unmodified
Isotype	IgG
Clonality	Polyclonal
Form	Liquid
Concentration	1mg/ml
Storage	Aliquot and store at -20°C (valid for 12 months). Avoid freeze/thaw cycles.
Shipping	Ice bags
Buffer	Liquid in PBS containing 50% glycerol, 0.5% protective protein and 0.02% New type preservative N.
Purification	Affinity purification

Application

Dilution Ratio	WB 1:500-1:2000,ICC/IF 1:200-1:1000,ELISA 1:5000-1:10000
Molecular Weight	40kDa

Antigen Information

Gene Name	GPR87
Alternative Names	GPR87; GPR95; FKSG78; G-protein coupled receptor 87; G-protein coupled receptor 95
Gene ID	53836.0
SwissProt ID	Q9BY21
Immunogen	The antiserum was produced against synthesized peptide derived from human GPR87. AA range:221-270

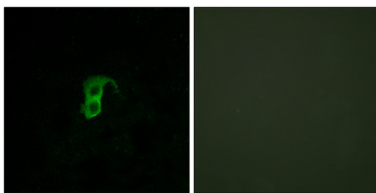
Background

This gene encodes a G protein-coupled receptor and is located in a cluster of G protein-couple receptor genes on chromosome

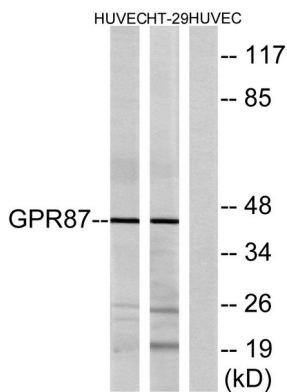
3. The encoded protein has been shown to be overexpressed in lung squamous cell carcinoma (PMID:18057535) and regulated by p53 (PMID:19602589). [provided by RefSeq, Nov 2011],function:Orphan receptor.,similarity:Belongs to the G-protein coupled receptor 1 family.,tissue specificity:Expressed in placenta and prostate. Weaker expression in thymus. Not expressed in thalamus, hippocampus, pons or cerebellum.,

Research Area

Image Data



Immunofluorescence analysis of HUVEC cells, using GPR87 Antibody. The picture on the right is blocked with the synthesized peptide.



Western blot analysis of lysates from HUVEC and HT-29 cells, using GPR87 Antibody. The lane on the right is blocked with the synthesized peptide.