

---

**Product Name: GPR48 Rabbit Polyclonal Antibody****Catalog #: APRab11688**

For research use only.

**Summary**

<b>Description</b>	Rabbit polyclonal Antibody
<b>Host</b>	Rabbit
<b>Application</b>	WB,ICC/IF,ELISA
<b>Reactivity</b>	Human,Rat,Mouse
<b>Conjugation</b>	Unconjugated
<b>Modification</b>	Unmodified
<b>Isotype</b>	IgG
<b>Clonality</b>	Polyclonal
<b>Form</b>	Liquid
<b>Concentration</b>	1mg/ml
<b>Storage</b>	Aliquot and store at -20°C (valid for 12 months). Avoid freeze/thaw cycles.
<b>Shipping</b>	Ice bags
<b>Buffer</b>	Liquid in PBS containing 50% glycerol, 0.5% protective protein and 0.02% New type preservative N.
<b>Purification</b>	Affinity purification

**Application**

<b>Dilution Ratio</b>	WB 1:500-1:2000,ICC/IF 1:200-1:1000,ELISA 1:5000-1:10000
<b>Molecular Weight</b>	100kDa

**Antigen Information**

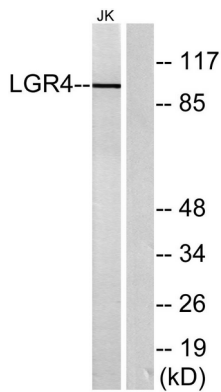
<b>Gene Name</b>	LGR4
<b>Alternative Names</b>	LGR4; GPR48; Leucine-rich repeat-containing G-protein coupled receptor 4; G-protein coupled receptor 48
<b>Gene ID</b>	55366.0
<b>SwissProt ID</b>	Q9BXB1
<b>Immunogen</b>	The antiserum was produced against synthesized peptide derived from human LGR4. AA range:461-510

**Background**

The protein encoded by this gene is a G-protein coupled receptor that binds R-spondins and activates the Wnt signaling pathway. This Wnt signaling pathway activation is necessary for proper development of many organs of the body. [provided by RefSeq, Oct 2016],function:Orphan receptor.,similarity:Belongs to the G-protein coupled receptor 1 family.,similarity:Contains 15 LRR (leucine-rich) repeats.,tissue specificity:Expressed in multiple steroidogenic tissues: placenta, ovary, testis and adrenal. Expressed also in spinal cord, thyroid, stomach, trachea, heart, pancreas, kidney, prostate and spleen.,

## Research Area

## Image Data



Western blot analysis of lysates from Jurkat cells, using LGR4 Antibody. The lane on the right is blocked with the synthesized peptide.