

Product Name: GPR45 Rabbit Polyclonal Antibody**Catalog #: APRab11687**

For research use only.

Summary

Description	Rabbit polyclonal Antibody
Host	Rabbit
Application	WB,ELISA
Reactivity	Human,Mouse
Conjugation	Unconjugated
Modification	Unmodified
Isotype	IgG
Clonality	Polyclonal
Form	Liquid
Concentration	1mg/ml
Storage	Aliquot and store at -20°C (valid for 12 months). Avoid freeze/thaw cycles.
Shipping	Ice bags
Buffer	Liquid in PBS containing 50% glycerol, and 0.02% New type preservative N.
Purification	Affinity purification

Application

Dilution Ratio	WB 1:500-1:2000,ELISA 1:5000-1:20000
Molecular Weight	40kDa

Antigen Information

Gene Name	GPR45
Alternative Names	
Gene ID	11250.0
SwissProt ID	Q9Y5Y3
Immunogen	Synthesized peptide derived from human protein . at AA range: 110-190

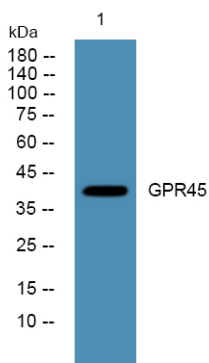
Background

This intronless gene encodes a member of the G protein-coupled receptor (GPCR) family. Members of this protein family contain seven putative transmembrane domains and may mediate signaling processes to the interior of the cell via activation of heterotrimeric G proteins. This protein may function in the central nervous system. [provided by RefSeq, Jul

2008],function:Orphan receptor. May play a role in brain function.,similarity:Belongs to the G-protein coupled receptor 1 family.,tissue specificity:Expressed in brain; detected in the basal forebrain, frontal cortex, and caudate, but not in thalamus, hippocampus, or putamen.,

Research Area

Image Data



Western blot analysis of lysates from Jarkat cells, GPR45 Rabbit Polyclonal Antibody was diluted at 1:1000, 4° over night