
Product Name: GPR4 Rabbit Polyclonal Antibody**Catalog #: APRab11682**

For research use only.

Summary

Description	Rabbit polyclonal Antibody
Host	Rabbit
Application	WB,ELISA
Reactivity	Human,Mouse,Rat
Conjugation	Unconjugated
Modification	Unmodified
Isotype	IgG
Clonality	Polyclonal
Form	Liquid
Concentration	1mg/ml
Storage	Aliquot and store at -20°C (valid for 12 months). Avoid freeze/thaw cycles.
Shipping	Ice bags
Buffer	Liquid in PBS containing 50% glycerol, and 0.02% New type preservative N.
Purification	Affinity purification

Application

Dilution Ratio	WB 1:500-1:2000,ELISA 1:5000-1:20000
Molecular Weight	39kDa

Antigen Information

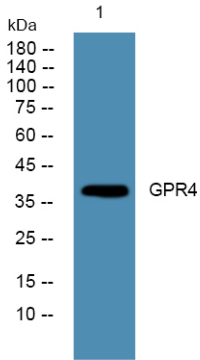
Gene Name	GPR4 GPR19
Alternative Names	
Gene ID	2828.0
SwissProt ID	P46093
Immunogen	Synthesized peptide derived from human protein . at AA range: 160-240

Background

function:Orphan receptor.,similarity:Belongs to the G-protein coupled receptor 1 family.,function:Orphan receptor.,similarity:Belongs to the G-protein coupled receptor 1 family.,

Research Area

Image Data



Western blot analysis of lysates from A431 cells, GPR4 Rabbit Polyclonal Antibody was diluted at 1:1000, 4° over night