

---

**Product Name: GPR38 Rabbit Polyclonal Antibody****Catalog #: APRab11680**

For research use only.

**Summary**

<b>Description</b>	Rabbit polyclonal Antibody
<b>Host</b>	Rabbit
<b>Application</b>	WB,ELISA
<b>Reactivity</b>	Human,Rat,Mouse
<b>Conjugation</b>	Unconjugated
<b>Modification</b>	Unmodified
<b>Isotype</b>	IgG
<b>Clonality</b>	Polyclonal
<b>Form</b>	Liquid
<b>Concentration</b>	1mg/ml
<b>Storage</b>	Aliquot and store at -20°C (valid for 12 months). Avoid freeze/thaw cycles.
<b>Shipping</b>	Ice bags
<b>Buffer</b>	Liquid in PBS containing 50% glycerol, 0.5% protective protein and 0.02% New type preservative N.
<b>Purification</b>	Affinity purification

**Application**

<b>Dilution Ratio</b>	WB 1:500-1:2000,ELISA 1:10000-1:20000
<b>Molecular Weight</b>	45kDa

**Antigen Information**

<b>Gene Name</b>	MLNR
<b>Alternative Names</b>	MLNR; GPR38; MTLR; MTLR1; Motilin receptor; G-protein coupled receptor 38
<b>Gene ID</b>	2862.0
<b>SwissProt ID</b>	O43193
<b>Immunogen</b>	Synthesized peptide derived from the C-terminal region of human GPR38.

**Background**

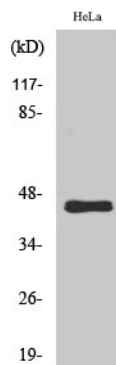
Motilin is a 22 amino acid peptide hormone expressed throughout the gastrointestinal (GI) tract. The protein encoded by this gene is a motilin receptor which is a member of the G-protein coupled receptor 1 family. This member is a multi-pass

transmembrane protein, and is an important therapeutic target for the treatment of hypomotility disorders. [provided by RefSeq, Aug 2011],function:Receptor for motilin.,similarity:Belongs to the G-protein coupled receptor 1 family.,tissue specificity:Expressed only in thyroid, stomach, and bone marrow.,

## Research Area

Neuroactive ligand-receptor interaction;

## Image Data



Western Blot analysis of various cells using GPR38 Polyclonal Antibody