

Product Name: GPR35 Rabbit Polyclonal Antibody**Catalog #: APRab11677**

For research use only.

Summary

Description	Rabbit polyclonal Antibody
Host	Rabbit
Application	WB,ICC/IF,ELISA
Reactivity	Human,Rat,Mouse
Conjugation	Unconjugated
Modification	Unmodified
Isotype	IgG
Clonality	Polyclonal
Form	Liquid
Concentration	1mg/ml
Storage	Aliquot and store at -20°C (valid for 12 months). Avoid freeze/thaw cycles.
Shipping	Ice bags
Buffer	Liquid in PBS containing 50% glycerol, 0.5% protective protein and 0.02% New type preservative N.
Purification	Affinity purification

Application

Dilution Ratio	WB 1:500-1:2000,ICC/IF 1:200-1:1000,ELISA 1:10000-1:20000
Molecular Weight	34kDa

Antigen Information

Gene Name	GPR35
Alternative Names	GPR35; G-protein coupled receptor 35; Kynurenic acid receptor; KYNA receptor
Gene ID	2859.0
SwissProt ID	Q9HC97
Immunogen	The antiserum was produced against synthesized peptide derived from human GPR35. AA range:51-100

Background

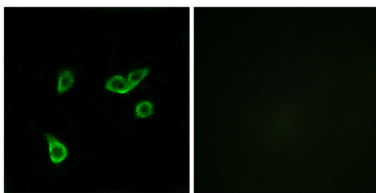
function:Orphan receptor.,similarity:Belongs to the G-protein coupled receptor 1 family.,tissue specificity:Expressed in all adult

and fetal tissues examined, including pancreatic islets and skeletal muscle, with relatively higher levels in adult lung, small intestine, colon and stomach.,function:Orphan receptor.,similarity:Belongs to the G-protein coupled receptor 1 family.,tissue specificity:Expressed in all adult and fetal tissues examined, including pancreatic islets and skeletal muscle, with relatively higher levels in adult lung, small intestine, colon and stomach.,

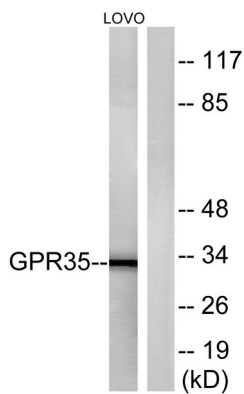
Research Area

Neuroactive ligand-receptor interaction;

Image Data



Immunofluorescence analysis of A549 cells, using GPR35 Antibody. The picture on the right is blocked with the synthesized peptide.



Western blot analysis of lysates from LOVO cells, using GPR35 Antibody. The lane on the right is blocked with the synthesized peptide.