

---

**Product Name: GPR32 Rabbit Polyclonal Antibody****Catalog #: APRab11674**

For research use only.

**Summary**

<b>Description</b>	Rabbit polyclonal Antibody
<b>Host</b>	Rabbit
<b>Application</b>	WB,ICC/IF,ELISA
<b>Reactivity</b>	Human,Rat,Mouse
<b>Conjugation</b>	Unconjugated
<b>Modification</b>	Unmodified
<b>Isotype</b>	IgG
<b>Clonality</b>	Polyclonal
<b>Form</b>	Liquid
<b>Concentration</b>	1mg/ml
<b>Storage</b>	Aliquot and store at -20°C (valid for 12 months). Avoid freeze/thaw cycles.
<b>Shipping</b>	Ice bags
<b>Buffer</b>	Liquid in PBS containing 50% glycerol, 0.5% protective protein and 0.02% New type preservative N.
<b>Purification</b>	Affinity purification

**Application**

<b>Dilution Ratio</b>	WB 1:500-1:2000,ICC/IF 1:200-1:1000,ELISA 1:10000-1:20000
<b>Molecular Weight</b>	33kDa

**Antigen Information**

<b>Gene Name</b>	GPR32
<b>Alternative Names</b>	GPR32; Probable G-protein coupled receptor 32
<b>Gene ID</b>	2854.0
<b>SwissProt ID</b>	O75388
<b>Immunogen</b>	The antiserum was produced against synthesized peptide derived from human GPR32. AA range:151-200

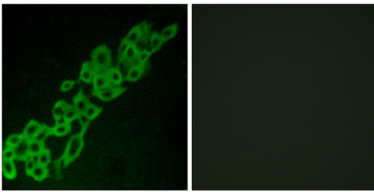
**Background**

This gene is intronless and encodes a member of the G-protein coupled receptor 1 family. The encoded protein binds to

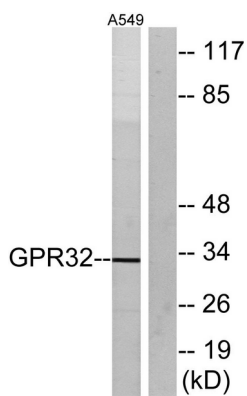
resolvin D1 and lipoxin A4 and has been linked to pulmonary inflammation. A related pseudogene has been identified on chromosome 19. [provided by RefSeq, Nov 2012],function:Orphan receptor.,similarity:Belongs to the G-protein coupled receptor 1 family.,

## Research Area

## Image Data



Immunofluorescence analysis of A549 cells, using GPR32 Antibody. The picture on the right is blocked with the synthesized peptide.



Western blot analysis of lysates from A549 cells, using GPR32 Antibody. The lane on the right is blocked with the synthesized peptide.