

Product Name: GPR31 Rabbit Polyclonal Antibody**Catalog #: APRab11673**

For research use only.

Summary

Description	Rabbit polyclonal Antibody
Host	Rabbit
Application	WB,ELISA
Reactivity	Human,Rat,Mouse
Conjugation	Unconjugated
Modification	Unmodified
Isotype	IgG
Clonality	Polyclonal
Form	Liquid
Concentration	1mg/ml
Storage	Aliquot and store at -20°C (valid for 12 months). Avoid freeze/thaw cycles.
Shipping	Ice bags
Buffer	Liquid in PBS containing 50% glycerol, 0.5% protective protein and 0.02% New type preservative N.
Purification	Affinity purification

Application

Dilution Ratio	WB 1:500-1:2000,ELISA 1:5000-1:10000
Molecular Weight	33kDa

Antigen Information

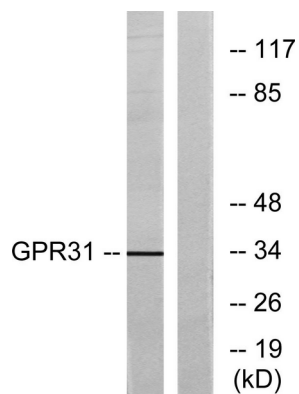
Gene Name	GPR31
Alternative Names	GPR31; 12-(S)-hydroxy-5; 8,10,14-eicosatetraenoic acid receptor; 12-(S)-HETE receptor; 12-HETER; G-protein coupled receptor 31
Gene ID	2853.0
SwissProt ID	O00270
Immunogen	The antiserum was produced against synthesized peptide derived from human GPR31. AA range:181-230

Background

function:Orphan receptor.,similarity:Belongs to the G-protein coupled receptor 1 family.,function:Orphan receptor.,similarity:Belongs to the G-protein coupled receptor 1 family.,

Research Area

Image Data



Western blot analysis of lysates from COLO cells, using GPR31 Antibody. The lane on the right is blocked with the synthesized peptide.