
Product Name: GPR25 Rabbit Polyclonal Antibody**Catalog #: APRab11669**

For research use only.

Summary

Description	Rabbit polyclonal Antibody
Host	Rabbit
Application	WB,ELISA
Reactivity	Human,Rat,Mouse
Conjugation	Unconjugated
Modification	Unmodified
Isotype	IgG
Clonality	Polyclonal
Form	Liquid
Concentration	1mg/ml
Storage	Aliquot and store at -20°C (valid for 12 months). Avoid freeze/thaw cycles.
Shipping	Ice bags
Buffer	Liquid in PBS containing 50% glycerol, 0.5% protective protein and 0.02% New type preservative N.
Purification	Affinity purification

Application

Dilution Ratio	WB 1:500-1:2000,ELISA 1:5000-1:10000
Molecular Weight	38kDa

Antigen Information

Gene Name	GPR25
Alternative Names	GPR25; Probable G-protein coupled receptor 25
Gene ID	2848.0
SwissProt ID	O00155
Immunogen	The antiserum was produced against synthesized peptide derived from human GPR25. AA range:193-242

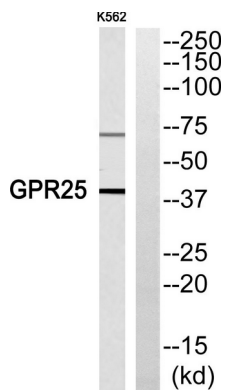
Background

This gene is intronless and encodes a member of the G-protein coupled receptor 1 family. G-protein coupled receptors are

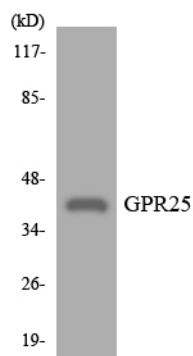
membrane proteins which activate signaling cascades as a response to extracellular stress. This gene has been linked to arterial stiffness. [provided by RefSeq, Nov 2012],function:Orphan receptor.,similarity:Belongs to the G-protein coupled receptor 1 family.,

Research Area

Image Data



Western blot analysis of GPR25 Antibody. The lane on the right is blocked with the GPR25 peptide.



Western blot analysis of the lysates from K562 cells using GPR25 antibody.