
Product Name: GPR20 Rabbit Polyclonal Antibody**Catalog #: APRab11666**

For research use only.

Summary

Description	Rabbit polyclonal Antibody
Host	Rabbit
Application	WB,IHC,ICC/IF,ELISA
Reactivity	Human,Rat,Mouse
Conjugation	Unconjugated
Modification	Unmodified
Isotype	IgG
Clonality	Polyclonal
Form	Liquid
Concentration	1mg/ml
Storage	Aliquot and store at -20°C (valid for 12 months). Avoid freeze/thaw cycles.
Shipping	Ice bags
Buffer	Liquid in PBS containing 50% glycerol, 0.5% protective protein and 0.02% New type preservative N.
Purification	Affinity purification

Application

Dilution Ratio	WB 1:500-1:2000,IHC 1:100-1:300,ICC/IF 1:200-1:1000,ELISA 1:5000-1:10000
Molecular Weight	42kDa

Antigen Information

Gene Name	GPR20
Alternative Names	GPR20; G-protein coupled receptor 20
Gene ID	2843.0
SwissProt ID	Q99678
Immunogen	The antiserum was produced against synthesized peptide derived from human GPR20. AA range:291-340

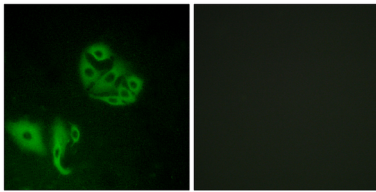
Background

function:Orphan receptor.,similarity:Belongs to the G-protein coupled receptor 1 family.,tissue specificity:Liver and the brain

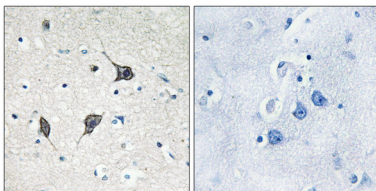
regions thalamus, putamen, and caudate, but not in frontal cortex, pons and hypothalamus.,function:Orphan receptor.,similarity:Belongs to the G-protein coupled receptor 1 family.,tissue specificity:Liver and the brain regions thalamus, putamen, and caudate, but not in frontal cortex, pons and hypothalamus.,

Research Area

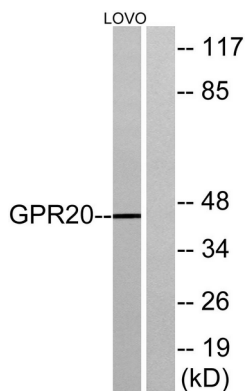
Image Data



Immunofluorescence analysis of A549 cells, using GPR20 Antibody. The picture on the right is blocked with the synthesized peptide.



Immunohistochemistry analysis of paraffin-embedded human brain tissue, using GPR20 Antibody. The picture on the right is blocked with the synthesized peptide.



Western blot analysis of lysates from LOVO cells, using GPR20 Antibody. The lane on the right is blocked with the synthesized peptide.