
Product Name: GPR19 Rabbit Polyclonal Antibody**Catalog #: APRab11665**

For research use only.

Summary

Description	Rabbit polyclonal Antibody
Host	Rabbit
Application	WB,IHC,ICC/IF,ELISA
Reactivity	Human,Mouse,Rat
Conjugation	Unconjugated
Modification	Unmodified
Isotype	IgG
Clonality	Polyclonal
Form	Liquid
Concentration	1mg/ml
Storage	Aliquot and store at -20°C (valid for 12 months). Avoid freeze/thaw cycles.
Shipping	Ice bags
Buffer	Liquid in PBS containing 50% glycerol, 0.5% protective protein and 0.02% New type preservative N.
Purification	Affinity purification

Application

Dilution Ratio	WB 1:500-1:2000,IHC 1:100-1:300,ICC/IF 1:200-1:1000,ELISA 1:5000-1:10000
Molecular Weight	47kDa

Antigen Information

Gene Name	GPR19
Alternative Names	GPR19; Probable G-protein coupled receptor 19; GPR-NGA
Gene ID	2842.0
SwissProt ID	Q15760
Immunogen	The antiserum was produced against synthesized peptide derived from human GPR19. AA range:361-410

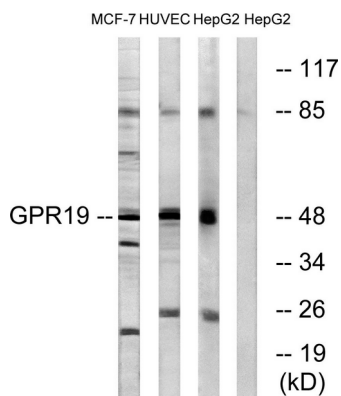
Background

function:Orphan receptor.,similarity:Belongs to the G-protein coupled receptor 1 family.,tissue specificity:Abundant expression

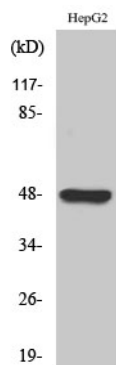
in the brain.,function:Orphan receptor.,similarity:Belongs to the G-protein coupled receptor 1 family.,tissue specificity:Abundant expression in the brain.,

Research Area

Image Data



Western blot analysis of lysates from MCF-7, HUVEC, and HepG2 cells, using GPR19 Antibody. The lane on the right is blocked with the synthesized peptide.



Western Blot analysis of various cells using GPR19 Polyclonal Antibody.