

**Product Name: GPR175 Rabbit Polyclonal Antibody****Catalog #: APRab11661**

For research use only.

**Summary**

<b>Description</b>	Rabbit polyclonal Antibody
<b>Host</b>	Rabbit
<b>Application</b>	WB,ICC/IF,ELISA
<b>Reactivity</b>	Human,Mouse,Rat
<b>Conjugation</b>	Unconjugated
<b>Modification</b>	Unmodified
<b>Isotype</b>	IgG
<b>Clonality</b>	Polyclonal
<b>Form</b>	Liquid
<b>Concentration</b>	1mg/ml
<b>Storage</b>	Aliquot and store at -20°C (valid for 12 months). Avoid freeze/thaw cycles.
<b>Shipping</b>	Ice bags
<b>Buffer</b>	Liquid in PBS containing 50% glycerol, 0.5% protective protein and 0.02% New type preservative N.
<b>Purification</b>	Affinity purification

**Application**

<b>Dilution Ratio</b>	WB 1:500-1:2000,ICC/IF 1:200-1:1000,ELISA 1:10000-1:20000
<b>Molecular Weight</b>	41kDa

**Antigen Information**

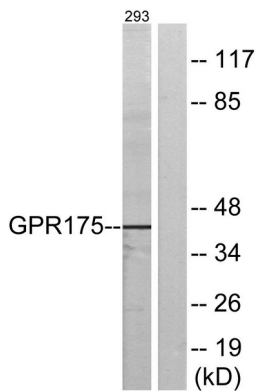
<b>Gene Name</b>	TPRA1
<b>Alternative Names</b>	TPRA1; GPR175; PP6566; Transmembrane protein adipocyte-associated 1; Integral membrane protein GPR175
<b>Gene ID</b>	131601.0
<b>SwissProt ID</b>	Q86W33
<b>Immunogen</b>	The antiserum was produced against synthesized peptide derived from human GPR175. AA range:198-247

**Background**

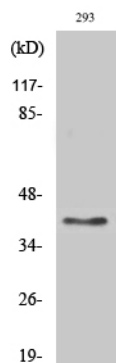
TPRA1 is a gene on chromosome 3q21.3 that encodes transmembrane protein adipocyte-associated 1 expressed in most tissues, especially in heart, placenta and kidney, and plays role in lipid metabolism and in ageing. Gene Ontology (GO) annotations related to this gene include G-protein coupled receptor activity, aging,

## Research Area

## Image Data



Western blot analysis of lysates from 293 cells, using GPR175 Antibody. The lane on the right is blocked with the synthesized peptide.



Western Blot analysis of various cells using GPR175 Polyclonal Antibody diluted at 1 : 2000