

**Product Name: GPR174 Rabbit Polyclonal Antibody****Catalog #: APRab11660**

For research use only.

**Summary**

<b>Description</b>	Rabbit polyclonal Antibody
<b>Host</b>	Rabbit
<b>Application</b>	WB,ICC/IF,ELISA
<b>Reactivity</b>	Human,Rat,Mouse
<b>Conjugation</b>	Unconjugated
<b>Modification</b>	Unmodified
<b>Isotype</b>	IgG
<b>Clonality</b>	Polyclonal
<b>Form</b>	Liquid
<b>Concentration</b>	1mg/ml
<b>Storage</b>	Aliquot and store at -20°C (valid for 12 months). Avoid freeze/thaw cycles.
<b>Shipping</b>	Ice bags
<b>Buffer</b>	Liquid in PBS containing 50% glycerol, 0.5% protective protein and 0.02% New type preservative N.
<b>Purification</b>	Affinity purification

**Application**

<b>Dilution Ratio</b>	WB 1:500-1:2000,ICC/IF 1:200-1:1000,ELISA 1:20000-1:40000
<b>Molecular Weight</b>	39kDa

**Antigen Information**

<b>Gene Name</b>	GPR174
<b>Alternative Names</b>	GPR174; FKSG79; Probable G-protein coupled receptor 174
<b>Gene ID</b>	84636.0
<b>SwissProt ID</b>	Q9BXC1
<b>Immunogen</b>	The antiserum was produced against synthesized peptide derived from human GPR174. AA range:131-180

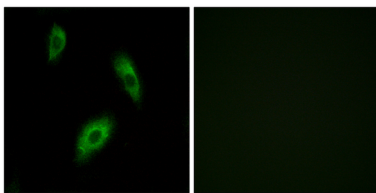
**Background**

This gene encodes a protein belonging to the G protein-coupled receptor superfamily. These proteins are characterized by the

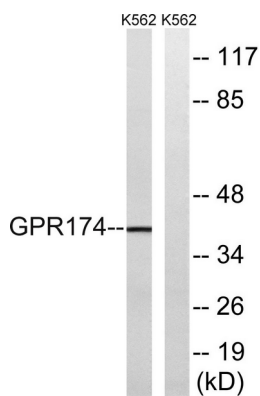
presence of seven alpha-helical transmembrane domains, and they activate or interact with various endogenous or exogenous ligands, including neurotransmitters, hormones, and odorant and taste substances. This family member is classified as an orphan receptor because the cognate ligand has not been identified. [provided by RefSeq, Sep 2011],function:Putative receptor for purines coupled to G-proteins.,similarity:Belongs to the G-protein coupled receptor 1 family.,

## Research Area

## Image Data



Immunofluorescence analysis of LOVO cells, using GPR174 Antibody. The picture on the right is blocked with the synthesized peptide.



Western blot analysis of lysates from K562 cells, using GPR174 Antibody. The lane on the right is blocked with the synthesized peptide.