

Product Name: GPR173 Rabbit Polyclonal Antibody**Catalog #: APRab11659**

For research use only.

Summary

Description	Rabbit polyclonal Antibody
Host	Rabbit
Application	WB,ICC/IF,ELISA
Reactivity	Human,Mouse,Rat
Conjugation	Unconjugated
Modification	Unmodified
Isotype	IgG
Clonality	Polyclonal
Form	Liquid
Concentration	1mg/ml
Storage	Aliquot and store at -20°C (valid for 12 months). Avoid freeze/thaw cycles.
Shipping	Ice bags
Buffer	Liquid in PBS containing 50% glycerol, 0.5% protective protein and 0.02% New type preservative N.
Purification	Affinity purification

Application

Dilution Ratio	WB 1:500-1:2000,ICC/IF 1:200-1:1000,ELISA 1:5000-1:20000
Molecular Weight	47kDa

Antigen Information

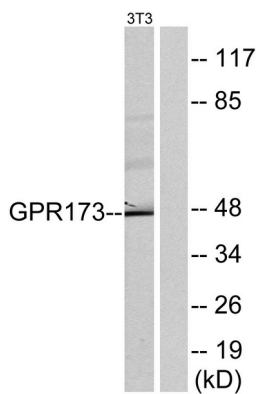
Gene Name	GPR173
Alternative Names	GPR173; SREB3; Probable G-protein coupled receptor 173; Super conserved receptor expressed in brain 3
Gene ID	54328.0
SwissProt ID	Q9NS66
Immunogen	The antiserum was produced against synthesized peptide derived from human GPR173. AA range:251-300

Background

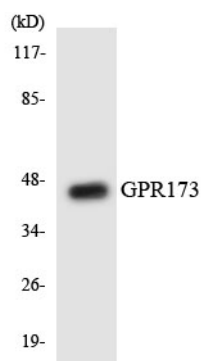
This gene encodes a member of the G-protein coupled receptor 1 family. This protein contains 7 transmembrane domains and conserved cysteine residues. [provided by RefSeq, Nov 2009],function:Orphan receptor.,similarity:Belongs to the G-protein coupled receptor 1 family.,tissue specificity:Expressed at high levels in brain and ovary. Lower levels in small intestine. In brain regions, detected in all regions tested. Highest levels in the cerebellum and cerebral cortex.,

Research Area

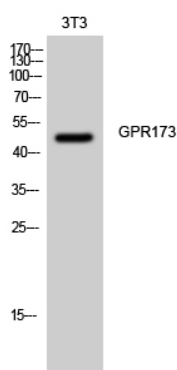
Image Data



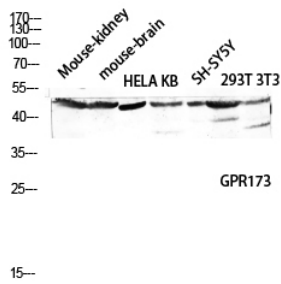
Western blot analysis of lysates from NIH/3T3 cells, using GPR173 Antibody. The lane on the right is blocked with the synthesized peptide.



Western blot analysis of the lysates from COLO205 cells using GPR173 antibody.



Western Blot analysis of 3T3 cells using GPR173 Polyclonal Antibody diluted at 1: 2 000



Western blot analysis of Mouse-kidney mouse-brain HELA KB SH-SY5Y 293T 3T3 lysis using GPR173 antibody. Antibody was diluted at 1:2000