

Product Name: GPR160 Rabbit Polyclonal Antibody**Catalog #: APRab11654**

For research use only.

Summary

Description	Rabbit polyclonal Antibody
Host	Rabbit
Application	WB,IHC,ICC/IF,ELISA
Reactivity	Human,Rat,Mouse
Conjugation	Unconjugated
Modification	Unmodified
Isotype	IgG
Clonality	Polyclonal
Form	Liquid
Concentration	1mg/ml
Storage	Aliquot and store at -20°C (valid for 12 months). Avoid freeze/thaw cycles.
Shipping	Ice bags
Buffer	Liquid in PBS containing 50% glycerol, 0.5% protective protein and 0.02% New type preservative N.
Purification	Affinity purification

Application

Dilution Ratio	WB 1:500-1:2000,IHC 1:100-1:300,ICC/IF 1:200-1:1000,ELISA 1:5000-1:20000
Molecular Weight	38kDa

Antigen Information

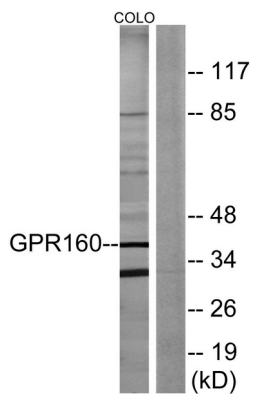
Gene Name	GPR160
Alternative Names	GPR160; GPCR150; Probable G-protein coupled receptor 160; G-protein coupled receptor GPCR1; hGPCR1
Gene ID	26996.0
SwissProt ID	Q9UJ42
Immunogen	The antiserum was produced against synthesized peptide derived from human GPR160. AA range:289-338

Background

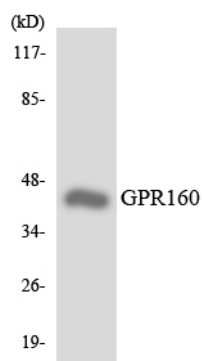
function:Orphan receptor.,similarity:Belongs to the G-protein coupled receptor 1 family.,function:Orphan receptor.,similarity:Belongs to the G-protein coupled receptor 1 family.,

Research Area

Image Data



Western blot analysis of lysates from COLO205 cells, using GPR160 Antibody. The lane on the right is blocked with the synthesized peptide.



Western blot analysis of the lysates from HUVECcells using GPR160 antibody.