

## Summary

<b>Production Name</b>	GPR157 Rabbit Polyclonal Antibody
<b>Description</b>	Rabbit Polyclonal Antibody
<b>Host</b>	Rabbit
<b>Application</b>	WB,IF-P,IF-F,ICC/IF,ELISA
<b>Reactivity</b>	Human,Rat,Mouse

## Performance

<b>Conjugation</b>	Unconjugated
<b>Modification</b>	Unmodified
<b>Isotype</b>	IgG
<b>Clonality</b>	Polyclonal
<b>Form</b>	Liquid
<b>Storage</b>	Store at 4°C short term. Aliquot and store at -20°C long term. Avoid freeze/thaw cycles.
<b>Buffer</b>	Liquid in PBS containing 50% glycerol, 0.5% protective protein and 0.02% New type preservative N.
<b>Purification</b>	Affinity purification

## Immunogen

<b>Gene Name</b>	GPR157
<b>Alternative Names</b>	GPR157; Probable G-protein coupled receptor 157
<b>Gene ID</b>	80045.0
<b>SwissProt ID</b>	Q5UAW9.The antiserum was produced against synthesized peptide derived from human GPR157. AA range:81-130

## Application

<b>Dilution Ratio</b>	WB 1:500-1:2000, IF-P/IF-F/ICC/IF 1:200-1:1000, ELISA 1:5000.Not yet tested in other applications.
<b>Molecular Weight</b>	37kDa

**Product Name: GPR157 Rabbit Polyclonal Antibody**  
**Catalog #: APRab11652**

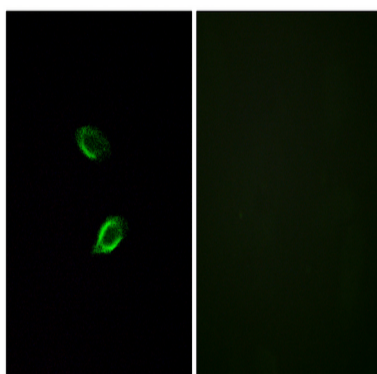


## Background

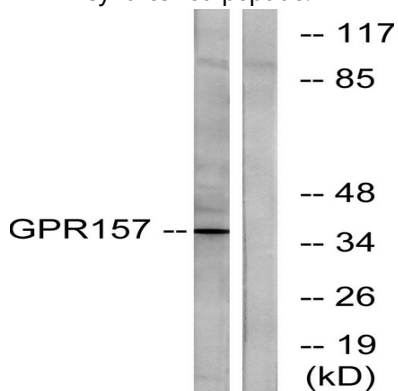
function:Orphan receptor.,similarity:Belongs to the G-protein coupled receptor 2 family.,function:Orphan receptor.,similarity:Belongs to the G-protein coupled receptor 2 family.,

## Research Area

## Image Data

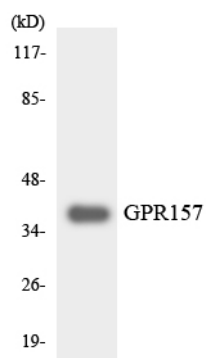


Immunofluorescence analysis of HUVEC cells, using GPR157 Antibody. The picture on the right is blocked with the synthesized peptide.



Western blot analysis of lysates from NIH/3T3 cells, using GPR157 Antibody. The lane on the right is blocked with the synthesized peptide.

**Product Name: GPR157 Rabbit Polyclonal Antibody**  
**Catalog #: APRab11652**



Western blot analysis of the lysates from RAW264.7 cells using GPR157 antibody.

### **Note**

For research use only.