

## Summary

<b>Production Name</b>	GPR156 Rabbit Polyclonal Antibody
<b>Description</b>	Rabbit Polyclonal Antibody
<b>Host</b>	Rabbit
<b>Application</b>	WB,IF-P,IF-F,ICC/IF,ELISA
<b>Reactivity</b>	Human,Rat,Mouse

## Performance

<b>Conjugation</b>	Unconjugated
<b>Modification</b>	Unmodified
<b>Isotype</b>	IgG
<b>Clonality</b>	Polyclonal
<b>Form</b>	Liquid
<b>Storage</b>	Store at 4°C short term. Aliquot and store at -20°C long term. Avoid freeze/thaw cycles.
<b>Buffer</b>	Liquid in PBS containing 50% glycerol, 0.5% protective protein and 0.02% New type preservative N.
<b>Purification</b>	Affinity purification

## Immunogen

<b>Gene Name</b>	GPR156
<b>Alternative Names</b>	GPR156; GABABL; PGR28; Probable G-protein coupled receptor 156; G-protein coupled receptor PGR28; GABAB-related G-protein coupled receptor
<b>Gene ID</b>	165829.0
<b>SwissProt ID</b>	Q8NFN8.The antiserum was produced against synthesized peptide derived from human GPR156. AA range:501-550

## Application

<b>Dilution Ratio</b>	WB 1:500-1:2000, IF-P/IF-F/ICC/IF 1:200-1:1000, ELISA 1:5000.Not yet tested in other applications.
-----------------------	--

**Product Name: GPR156 Rabbit Polyclonal Antibody**  
**Catalog #: AP Rab11651**



**Molecular Weight** 89kDa

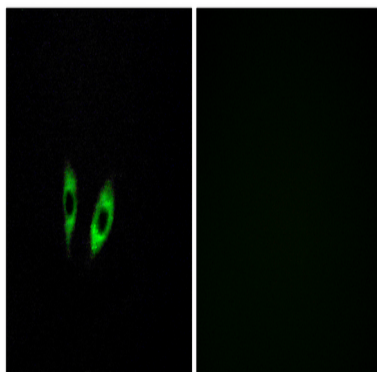
## Background

G protein-coupled receptors (GPCRs) are a large superfamily of cell surface receptors characterized by 7 helical transmembrane domains, together with N-terminal extracellular and C-terminal intracellular domains.[supplied by OMIM, Mar 2008],function:Orphan receptor.,similarity:Belongs to the G-protein coupled receptor 3 family. GABA-B receptor subfamily.,tissue specificity:Ubiquitous expression both in the CNS and in peripheral tissues. Very high expression in fetal brain and testis relative to expression in other tissues.,

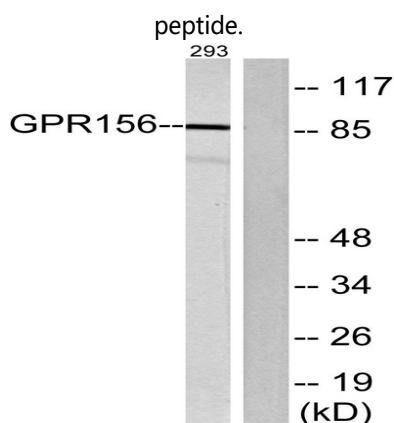
## Research Area

Neuroactive ligand-receptor interaction;

## Image Data



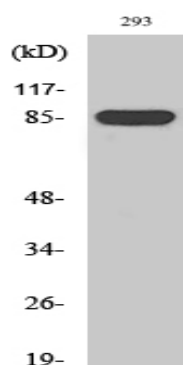
Immunofluorescence analysis of HeLa cells, using GPR156 Antibody. The picture on the right is blocked with the synthesized



Western blot analysis of lysates from 293 cells, using GPR156 Antibody. The lane on the right is blocked with the synthesized peptide.

**Product Name: GPR156 Rabbit Polyclonal Antibody**  
**Catalog #: APRab11651**

---



Western Blot analysis of various cells using GPR156 Polyclonal Antibody

**Note**

For research use only.