

---

**Product Name: GPR153 Rabbit Polyclonal Antibody****Catalog #: APRab11650**

For research use only.

**Summary**

<b>Description</b>	Rabbit polyclonal Antibody
<b>Host</b>	Rabbit
<b>Application</b>	WB,IHC,ICC/IF,ELISA
<b>Reactivity</b>	Human,Mouse,Rat
<b>Conjugation</b>	Unconjugated
<b>Modification</b>	Unmodified
<b>Isotype</b>	IgG
<b>Clonality</b>	Polyclonal
<b>Form</b>	Liquid
<b>Concentration</b>	1mg/ml
<b>Storage</b>	Aliquot and store at -20°C (valid for 12 months). Avoid freeze/thaw cycles.
<b>Shipping</b>	Ice bags
<b>Buffer</b>	Liquid in PBS containing 50% glycerol, 0.5% protective protein and 0.02% New type preservative N.
<b>Purification</b>	Affinity purification

**Application**

<b>Dilution Ratio</b>	WB 1:500-1:2000,IHC 1:100-1:300,ICC/IF 1:200-1:1000,ELISA 1:5000-1:20000
<b>Molecular Weight</b>	65kDa

**Antigen Information**

<b>Gene Name</b>	GPR153
<b>Alternative Names</b>	GPR153; PGR1; Probable G-protein coupled receptor 153; G-protein coupled receptor PGR1
<b>Gene ID</b>	387509.0
<b>SwissProt ID</b>	Q6NV75
<b>Immunogen</b>	The antiserum was produced against synthesized peptide derived from human GPR153. AA range:195-244

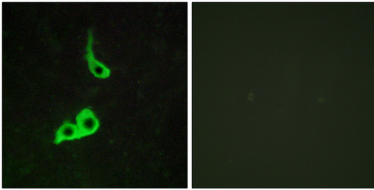
**Background**

function:Orphan receptor.,similarity:Belongs to the G-protein coupled receptor 1 family.,function:Orphan

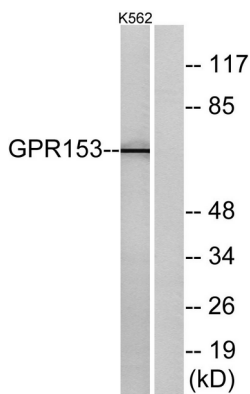
receptor.,similarity:Belongs to the G-protein coupled receptor 1 family.,

## Research Area

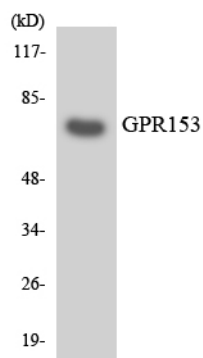
## Image Data



Immunofluorescence analysis of LOVO cells, using GPR153 Antibody. The picture on the right is blocked with the synthesized peptide.



Western blot analysis of lysates from K562 cells, using GPR153 Antibody. The lane on the right is blocked with the synthesized peptide.



Western blot analysis of the lysates from HepG2 cells using GPR153 antibody.