

Product Name: GPR152 Rabbit Polyclonal Antibody
Catalog #: AP Rab11649



Summary

Production Name	GPR152 Rabbit Polyclonal Antibody
Description	Rabbit Polyclonal Antibody
Host	Rabbit
Application	WB,IF-P,IF-F,ICC/IF,ELISA
Reactivity	Human,Rat,Mouse

Performance

Conjugation	Unconjugated
Modification	Unmodified
Isotype	IgG
Clonality	Polyclonal
Form	Liquid
Storage	Store at 4°C short term. Aliquot and store at -20°C long term. Avoid freeze/thaw cycles.
Buffer	Liquid in PBS containing 50% glycerol, 0.5% protective protein and 0.02% New type preservative N.
Purification	Affinity purification

Immunogen

Gene Name	GPR152
Alternative Names	GPR152; PGR5; Probable G-protein coupled receptor 152; G-protein coupled receptor PGR5
Gene ID	390212.0
SwissProt ID	Q8TDT2.The antiserum was produced against synthesized peptide derived from human GPR152. AA range:10-59

Application

Dilution Ratio	WB 1:500-1:2000, IF-P/IF-F/ICC/IF 1:200-1:1000, ELISA 1:20000.Not yet tested in other applications.
-----------------------	---

Product Name: GPR152 Rabbit Polyclonal Antibody
Catalog #: APRab11649



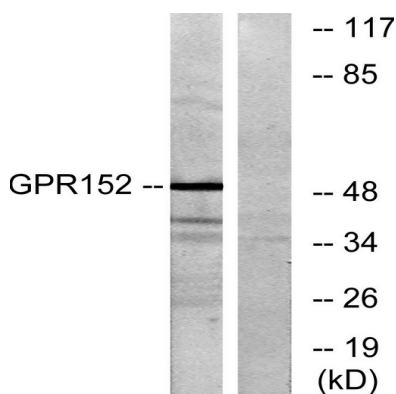
Molecular Weight 51kDa

Background

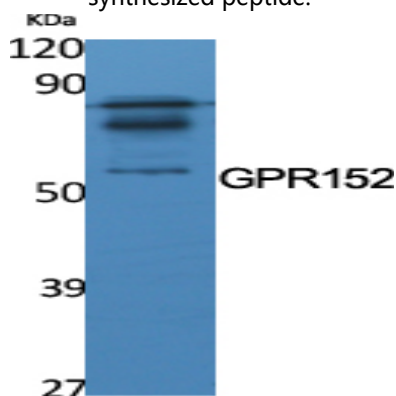
function:Orphan receptor.,similarity:Belongs to the G-protein coupled receptor 1 family.,function:Orphan receptor.,similarity:Belongs to the G-protein coupled receptor 1 family.,

Research Area

Image Data

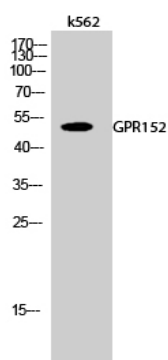


Western blot analysis of lysates from Jurkat cells, using GPR152 Antibody. The lane on the right is blocked with the synthesized peptide.



Western Blot analysis of various cells using GPR152 Polyclonal Antibody

Product Name: GPR152 Rabbit Polyclonal Antibody
Catalog #: APRab11649



Western Blot analysis of k562 cells using GPR152 Polyclonal Antibody

Note

For research use only.