
Product Name: GPR15 Rabbit Polyclonal Antibody**Catalog #: APRab11646**

For research use only.

Summary

Description	Rabbit polyclonal Antibody
Host	Rabbit
Application	WB,ICC/IF,ELISA
Reactivity	Human,Mouse
Conjugation	Unconjugated
Modification	Unmodified
Isotype	IgG
Clonality	Polyclonal
Form	Liquid
Concentration	1mg/ml
Storage	Aliquot and store at -20°C (valid for 12 months). Avoid freeze/thaw cycles.
Shipping	Ice bags
Buffer	Liquid in PBS containing 50% glycerol, 0.5% protective protein and 0.02% New type preservative N.
Purification	Affinity purification

Application

Dilution Ratio	WB 1:500-1:2000,ICC/IF 1:200-1:1000,ELISA 1:5000-1:20000
Molecular Weight	40kDa

Antigen Information

Gene Name	GPR15
Alternative Names	GPR15; G-protein coupled receptor 15; Brother of Bonzo; BoB
Gene ID	2838.0
SwissProt ID	P49685
Immunogen	The antiserum was produced against synthesized peptide derived from human GPR15. AA range:201-250

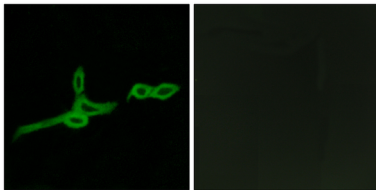
Background

This gene encodes a G protein-coupled receptor that acts as a chemokine receptor for human immunodeficiency virus type 1

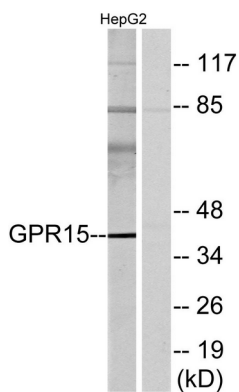
and 2. The encoded protein localizes to the cell membrane. [provided by RefSeq, Nov 2012],function:Probable chemokine receptor. Alternative coreceptor with CD4 for HIV-1 infection.,similarity:Belongs to the G-protein coupled receptor 1 family.,

Research Area

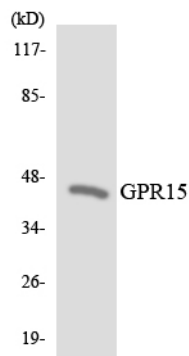
Image Data



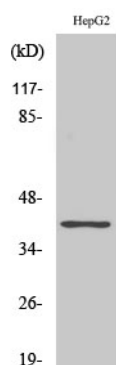
Immunofluorescence analysis of LOVO cells, using GPR15 Antibody. The picture on the right is blocked with the synthesized peptide.



Western blot analysis of lysates from HepG2 cells, using GPR15 Antibody. The lane on the right is blocked with the synthesized peptide.



Western blot analysis of the lysates from HeLa cells using GPR15 antibody.



Western Blot analysis of various cells using GPR15 Polyclonal Antibody

