
Product Name: GPR149 Rabbit Polyclonal Antibody**Catalog #: APRab11645**

For research use only.

Summary

Description	Rabbit polyclonal Antibody
Host	Rabbit
Application	WB,IHC,ICC/IF,ELISA
Reactivity	Human,Rat,Mouse
Conjugation	Unconjugated
Modification	Unmodified
Isotype	IgG
Clonality	Polyclonal
Form	Liquid
Concentration	1mg/ml
Storage	Aliquot and store at -20°C (valid for 12 months). Avoid freeze/thaw cycles.
Shipping	Ice bags
Buffer	Liquid in PBS containing 50% glycerol, 0.5% protective protein and 0.02% New type preservative N.
Purification	Affinity purification

Application

Dilution Ratio	WB 1:500-1:2000,IHC 1:100-1:300,ICC/IF 1:200-1:1000,ELISA 1:5000-1:10000
Molecular Weight	81kDa

Antigen Information

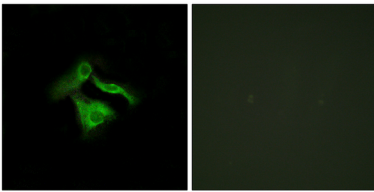
Gene Name	GPR149
Alternative Names	GPR149; PGR10; Probable G-protein coupled receptor 149; G-protein coupled receptor PGR10
Gene ID	344758.0
SwissProt ID	Q86SP6
Immunogen	The antiserum was produced against synthesized peptide derived from human GPR149. AA range:451-500

Background

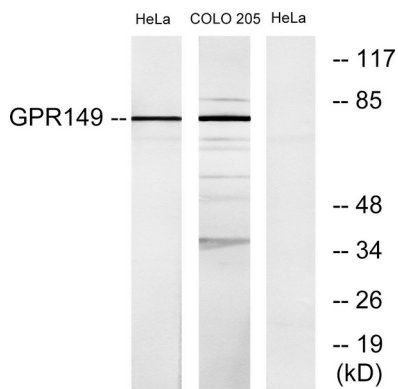
function:Orphan receptor.,similarity:Belongs to the G-protein coupled receptor 1 family.,function:Orphan receptor.,similarity:Belongs to the G-protein coupled receptor 1 family.,

Research Area

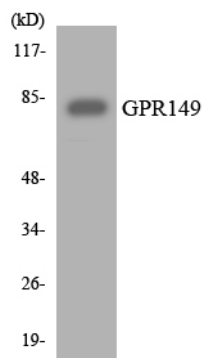
Image Data



Immunofluorescence analysis of HeLa cells, using GPR149 Antibody. The picture on the right is blocked with the synthesized peptide.



Western blot analysis of lysates from HeLa and COLO205 cells, using GPR149 Antibody. The lane on the right is blocked with the synthesized peptide.



Western blot analysis of the lysates from 293 cells using GPR149 antibody.