
Product Name: GPR139 Rabbit Polyclonal Antibody**Catalog #: APRab11640**

For research use only.

Summary

Description	Rabbit polyclonal Antibody
Host	Rabbit
Application	WB,ICC/IF,ELISA
Reactivity	Human,Mouse,Rat
Conjugation	Unconjugated
Modification	Unmodified
Isotype	IgG
Clonality	Polyclonal
Form	Liquid
Concentration	1mg/ml
Storage	Aliquot and store at -20°C (valid for 12 months). Avoid freeze/thaw cycles.
Shipping	Ice bags
Buffer	Liquid in PBS containing 50% glycerol, 0.5% protective protein and 0.02% New type preservative N.
Purification	Affinity purification

Application

Dilution Ratio	WB 1:500-1:2000,ICC/IF 1:200-1:1000,ELISA 1:5000-1:10000
Molecular Weight	40kDa

Antigen Information

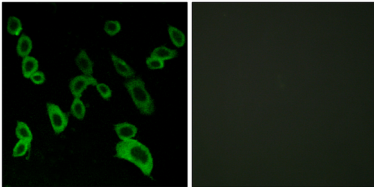
Gene Name	GPR139
Alternative Names	GPR139; GPRG1; PGR3; Probable G-protein coupled receptor 139; G(q)-coupled orphan receptor GPRg1; G-protein-coupled receptor PGR3
Gene ID	124274.0
SwissProt ID	Q6DWJ6
Immunogen	The antiserum was produced against synthesized peptide derived from human GPR139. AA range:181-230

Background

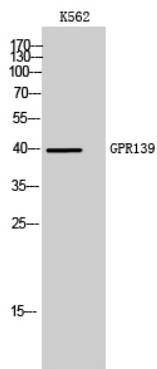
This gene encodes a member of the rhodopsin family of G-protein-coupled receptors. The encoded protein is almost exclusively expressed in the central nervous system. L-tryptophan and L-phenylalanine may act as the physiologic ligands of the encoded protein. Alternative splicing results in multiple transcript variants. [provided by RefSeq, Jan 2016],function:Orphan receptor. Seems to act through a G(q/11)-mediated pathway.,similarity:Belongs to the G-protein coupled receptor 1 family.,tissue specificity:Expressed almost exclusively in the brain. Detected at very low levels in the peripheral tissues,.

Research Area

Image Data



Immunofluorescence analysis of LOVO cells, using GPR139 Antibody. The picture on the right is blocked with the synthesized peptide.



Western Blot analysis of K562 cells using GPR139 Polyclonal Antibody