

Product Name: GPR137C Rabbit Polyclonal Antibody**Catalog #: APRab11639**

For research use only.

Summary

Description	Rabbit polyclonal Antibody
Host	Rabbit
Application	WB,IHC,ICC/IF,ELISA
Reactivity	Human,Rat,Mouse
Conjugation	Unconjugated
Modification	Unmodified
Isotype	IgG
Clonality	Polyclonal
Form	Liquid
Concentration	1mg/ml
Storage	Aliquot and store at -20°C (valid for 12 months). Avoid freeze/thaw cycles.
Shipping	Ice bags
Buffer	Liquid in PBS containing 50% glycerol, 0.5% protective protein and 0.02% New type preservative N.
Purification	Affinity purification

Application

Dilution Ratio	WB 1:500-1:2000,IHC 1:100-1:300,ICC/IF 1:200-1:1000,ELISA 1:5000-1:20000
Molecular Weight	45kDa

Antigen Information

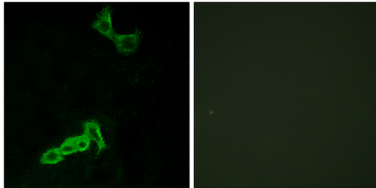
Gene Name	GPR137C
Alternative Names	GPR137C; TM7SF1L2; Integral membrane protein GPR137C; Transmembrane 7 superfamily member 1-like 2 protein
Gene ID	283554.0
SwissProt ID	Q8N3F9
Immunogen	The antiserum was produced against synthesized peptide derived from human GPR137C. AA range:256-305

Background

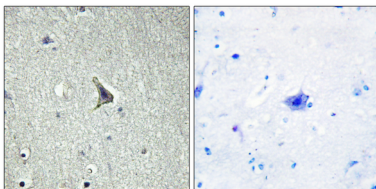
similarity:Belongs to the GPR137 family.,similarity:Belongs to the GPR137 family.,

Research Area

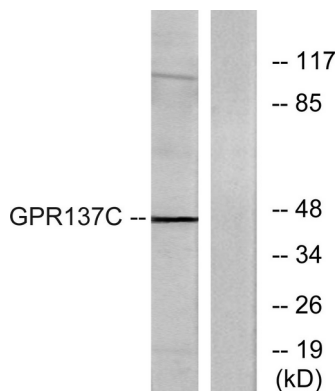
Image Data



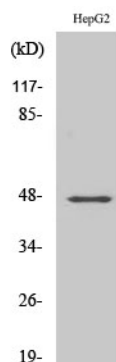
Immunofluorescence analysis of MCF7 cells, using GPR137C Antibody. The picture on the right is blocked with the synthesized peptide.



Immunohistochemistry analysis of paraffin-embedded human brain tissue, using GPR137C Antibody. The picture on the right is blocked with the synthesized peptide.



Western blot analysis of lysates from HepG2 cells, using GPR137C Antibody. The lane on the right is blocked with the synthesized peptide.



Western Blot analysis of various cells using GPR137C Polyclonal Antibody