
Product Name: GPR124 Rabbit Polyclonal Antibody**Catalog #: APRab11634**

For research use only.

Summary

Description	Rabbit polyclonal Antibody
Host	Rabbit
Application	WB,ICC/IF,ELISA
Reactivity	Human,Mouse
Conjugation	Unconjugated
Modification	Unmodified
Isotype	IgG
Clonality	Polyclonal
Form	Liquid
Concentration	1mg/ml
Storage	Aliquot and store at -20°C (valid for 12 months). Avoid freeze/thaw cycles.
Shipping	Ice bags
Buffer	Liquid in PBS containing 50% glycerol, 0.5% protective protein and 0.02% New type preservative N.
Purification	Affinity purification

Application

Dilution Ratio	WB 1:500-1:2000,ICC/IF 1:200-1:1000,ELISA 1:5000-1:20000
Molecular Weight	145kDa

Antigen Information

Gene Name	GPR124
Alternative Names	GPR124; KIAA1531; TEM5; G-protein coupled receptor 124; Tumor endothelial marker 5
Gene ID	25960.0
SwissProt ID	Q96PE1
Immunogen	The antiserum was produced against synthesized peptide derived from human GPR124. AA range:1151-1200

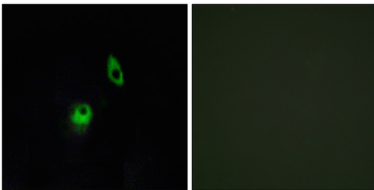
Background

caution:It is uncertain whether Met-1 or Met-8 is the initiator.,domain: Binds to DLG1 through its PDZ-binding

motif.,function:Orphan receptor.,similarity:Belongs to the G-protein coupled receptor 2 family. LN-TM7 subfamily.,similarity:Contains 1 GPS domain.,similarity:Contains 1 Ig-like (immunoglobulin-like) domain.,similarity:Contains 5 LRR (leucine-rich) repeats.,subunit:Interacts with DLG1.,tissue specificity:Expressed in endothelial cells (at protein level). Abundantly expressed in tumor vessels, heart, placenta, ovary, small intestine, and colon.,caution:It is uncertain whether Met-1 or Met-8 is the initiator.,domain:Binds to DLG1 through its PDZ-binding motif.,function:Orphan receptor.,similarity:Belongs to the G-protein coupled receptor 2 family. LN-TM7 subfamily.,similarity:Contains 1 GPS domain.,similarity:Contains 1 Ig-like (immunoglobulin-like) domain.,similarity:Contains 5 LRR (leucine-rich) repeats.,subunit:Interacts with DLG1.,tissue specificity:Expressed in endothelial cells (at protein level). Abundantly expressed in tumor vessels, heart, placenta, ovary, small intestine, and colon.,

Research Area

Image Data



Immunofluorescence analysis of HeLa cells, using GPR124 Antibody. The picture on the right is blocked with the synthesized peptide.