
Product Name: GPR123 Rabbit Polyclonal Antibody**Catalog #: APRab11633**

For research use only.

Summary

Description	Rabbit polyclonal Antibody
Host	Rabbit
Application	ICC/IF,ELISA
Reactivity	Human,Rat,Mouse
Conjugation	Unconjugated
Modification	Unmodified
Isotype	IgG
Clonality	Polyclonal
Form	Liquid
Concentration	1mg/ml
Storage	Aliquot and store at -20°C (valid for 12 months). Avoid freeze/thaw cycles.
Shipping	Ice bags
Buffer	Liquid in PBS containing 50% glycerol, 0.5% protective protein and 0.02% New type preservative N.
Purification	Affinity purification

Application

Dilution Ratio ICC/IF 1:200-1:1000,ELISA 1:5000-1:10000

Molecular Weight

Antigen Information

Gene Name	GPR123
Alternative Names	GPR123; KIAA1828; Probable G-protein coupled receptor 123
Gene ID	84435.0
SwissProt ID	Q86SQ6
Immunogen	The antiserum was produced against synthesized peptide derived from human GPR123. AA range:201-250

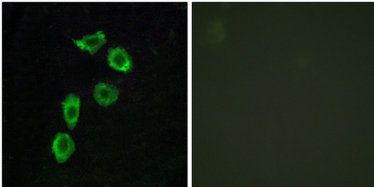
Background

This gene encodes a protein that belongs to the adhesion family of G-protein-coupled receptors. Members of this family

function in several sensory systems and regulate blood pressure, immune responses, food intake and development. A similar protein in rodents is thought to play a role in in the regulation of neuronal signaling pathways. Several alternatively spliced transcript variants of this gene have been described, but the full-length nature of some of these variants has not been determined. [provided by RefSeq, Mar 2014],function:Orphan receptor.,similarity:Belongs to the G-protein coupled receptor 2 family. LN-TM7 subfamily.,

Research Area

Image Data



Immunofluorescence analysis of HUVEC cells, using GPR123 Antibody. The picture on the right is blocked with the synthesized peptide.