

---

**Product Name: GPR120 Rabbit Polyclonal Antibody****Catalog #: APRab11632**

For research use only.

**Summary**

<b>Description</b>	Rabbit polyclonal Antibody
<b>Host</b>	Rabbit
<b>Application</b>	WB,ICC/IF,ELISA
<b>Reactivity</b>	Human,Mouse,Rat
<b>Conjugation</b>	Unconjugated
<b>Modification</b>	Unmodified
<b>Isotype</b>	IgG
<b>Clonality</b>	Polyclonal
<b>Form</b>	Liquid
<b>Concentration</b>	1mg/ml
<b>Storage</b>	Aliquot and store at -20°C (valid for 12 months). Avoid freeze/thaw cycles.
<b>Shipping</b>	Ice bags
<b>Buffer</b>	Liquid in PBS containing 50% glycerol, 0.5% protective protein and 0.02% New type preservative N.
<b>Purification</b>	Affinity purification

**Application**

<b>Dilution Ratio</b>	WB 1:500-1:2000,ICC/IF 1:200-1:1000,ELISA 1:5000-1:10000
<b>Molecular Weight</b>	38kDa

**Antigen Information**

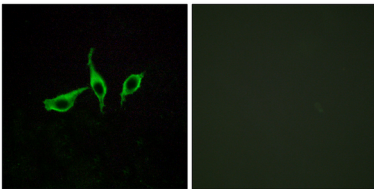
<b>Gene Name</b>	O3FAR1 O3FAR1; GPR120; GPR129; PGR4; Omega-3 fatty acid receptor 1; G-protein coupled receptor
<b>Alternative Names</b>	120; G-protein coupled receptor 129; G-protein coupled receptor GT01; G-protein coupled receptor PGR4
<b>Gene ID</b>	338557.0
<b>SwissProt ID</b>	Q5NUL3
<b>Immunogen</b>	The antiserum was produced against synthesized peptide derived from human GPR120. AA range:221-270

## Background

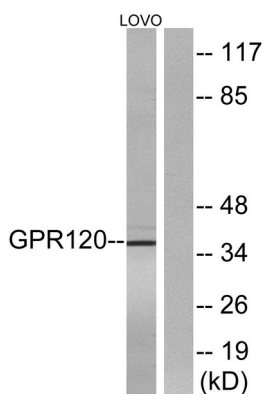
This gene encodes a G protein-coupled receptor (GPR) which belongs to the rhodopsin family of GPRs. The encoded protein functions as a receptor for free fatty acids, including omega-3, and participates in suppressing anti-inflammatory responses and insulin sensitizing. Multiple transcript variants encoding different isoforms have been found for this gene. [provided by RefSeq, Feb 2012],function:Receptor for unsaturated long-chain free fatty acid (FAA). Binding of the ligand promotes the secretion of glucagon-like peptide-1 from the gastro-intestinal tract.,similarity:Belongs to the G-protein coupled receptor 1 family.,tissue specificity:Abundant expression in the intestinal tract.,

## Research Area

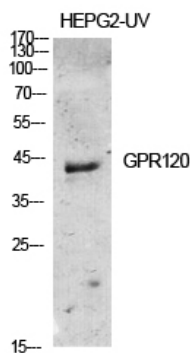
### Image Data



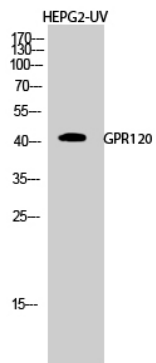
Immunofluorescence analysis of LOVO cells, using GPR120 Antibody. The picture on the right is blocked with the synthesized peptide.



Western blot analysis of lysates from LOVO cells, using GPR120 Antibody. The lane on the right is blocked with the synthesized peptide.



Western Blot analysis of various cells using GPR120 Polyclonal Antibody diluted at 1 : 500



Western Blot analysis of HEPG2-UV cells using GPR120 Polyclonal Antibody diluted at 1: 500