
Product Name: GPR12 Rabbit Polyclonal Antibody**Catalog #: APRab11631**

For research use only.

Summary

Description	Rabbit polyclonal Antibody
Host	Rabbit
Application	WB,ICC/IF,ELISA
Reactivity	Human,Rat,Mouse
Conjugation	Unconjugated
Modification	Unmodified
Isotype	IgG
Clonality	Polyclonal
Form	Liquid
Concentration	1mg/ml
Storage	Aliquot and store at -20°C (valid for 12 months). Avoid freeze/thaw cycles.
Shipping	Ice bags
Buffer	Liquid in PBS containing 50% glycerol, 0.5% protective protein and 0.02% New type preservative N.
Purification	Affinity purification

Application

Dilution Ratio	WB 1:500-1:2000,ICC/IF 1:200-1:1000,ELISA 1:5000-1:10000
Molecular Weight	37kDa

Antigen Information

Gene Name	GPR12
Alternative Names	GPR12; G-protein coupled receptor 12
Gene ID	2835.0
SwissProt ID	P47775
Immunogen	The antiserum was produced against synthesized peptide derived from human GPR12. AA range:1-50

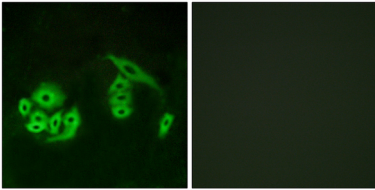
Background

function:Orphan receptor.,similarity:Belongs to the G-protein coupled receptor 1 family.,function:Orphan

receptor.,similarity:Belongs to the G-protein coupled receptor 1 family.,

Research Area

Image Data



Immunofluorescence analysis of A549 cells, using GPR12 Antibody. The picture on the right is blocked with the synthesized peptide.