
Product Name: GPR119 Rabbit Polyclonal Antibody**Catalog #: APRab11630**

For research use only.

Summary

Description	Rabbit polyclonal Antibody
Host	Rabbit
Application	WB,ICC/IF,ELISA
Reactivity	Human,Rat,Mouse
Conjugation	Unconjugated
Modification	Unmodified
Isotype	IgG
Clonality	Polyclonal
Form	Liquid
Concentration	1mg/ml
Storage	Aliquot and store at -20°C (valid for 12 months). Avoid freeze/thaw cycles.
Shipping	Ice bags
Buffer	Liquid in PBS containing 50% glycerol, 0.5% protective protein and 0.02% New type preservative N.
Purification	Affinity purification

Application

Dilution Ratio	WB 1:500-1:2000,ICC/IF 1:200-1:1000,ELISA 1:5000-1:20000
Molecular Weight	37kDa

Antigen Information

Gene Name	GPR119
Alternative Names	GPR119; Glucose-dependent insulinotropic receptor; G-protein coupled receptor 119
Gene ID	139760.0
SwissProt ID	Q8TDV5
Immunogen	The antiserum was produced against synthesized peptide derived from human GPR119. AA range:186-235

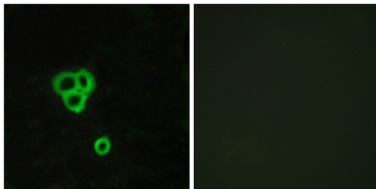
Background

This gene encodes a member of the rhodopsin subfamily of G-protein-coupled receptors that is expressed in the pancreas and

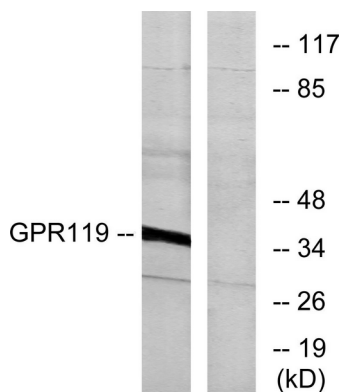
gastrointestinal tract. The encoded protein is activated by lipid amides including lysophosphatidylcholine and oleoylethanolamide and may be involved in glucose homeostasis. This protein is a potential drug target in the treatment of type 2 diabetes.[provided by RefSeq, Jan 2010],function:Receptor for the endogenous fatty-acid ethanolamide oleoylethanolamide (OEA) and lysophosphatidylcholine (LPC). Functions as a glucose-dependent insulinotropic receptor. The activity of this receptor is mediated by G proteins which activate adenylate cyclase. Seems to act through a G(s) mediated pathway.,similarity:Belongs to the G-protein coupled receptor 1 family.,tissue specificity:Predominantly expressed in the pancreas, especially in the islets.,

Research Area

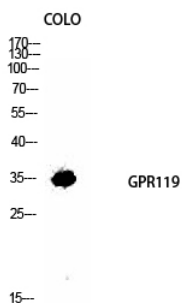
Image Data



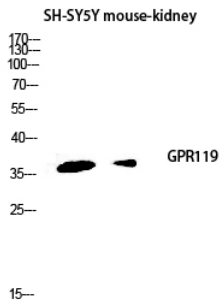
Immunofluorescence analysis of MCF7 cells, using GPR119 Antibody. The picture on the right is blocked with the synthesized peptide.



Western blot analysis of lysates from K562 cells, using GPR119 Antibody. The lane on the right is blocked with the synthesized peptide.



Western Blot analysis of COLO cells using GPR119 Polyclonal Antibody diluted at 1: 1000



Western blot analysis of SH-SY5Y mouse-kidney lysis using GPR119 antibody.
Antibody was diluted at 1:1000