

Product Name: GPR108 Rabbit Polyclonal Antibody**Catalog #: APRab11624**

For research use only.

Summary

Description	Rabbit polyclonal Antibody
Host	Rabbit
Application	WB,ICC/IF,ELISA
Reactivity	Human,Rat,Mouse
Conjugation	Unconjugated
Modification	Unmodified
Isotype	IgG
Clonality	Polyclonal
Form	Liquid
Concentration	1mg/ml
Storage	Aliquot and store at -20°C (valid for 12 months). Avoid freeze/thaw cycles.
Shipping	Ice bags
Buffer	Liquid in PBS containing 50% glycerol, 0.5% protective protein and 0.02% New type preservative N.
Purification	Affinity purification

Application

Dilution Ratio	WB 1:500-1:2000,ICC/IF 1:200-1:1000,ELISA 1:5000-1:10000
Molecular Weight	60kDa

Antigen Information

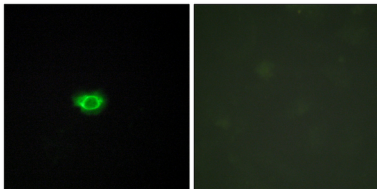
Gene Name	GPR108
Alternative Names	GPR108; LUSTR2; Protein GPR108; Lung seven transmembrane receptor 2
Gene ID	56927.0
SwissProt ID	Q9NPR9
Immunogen	The antiserum was produced against synthesized peptide derived from human GPR108. AA range:155-204

Background

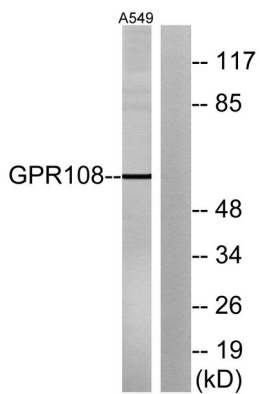
similarity:Belongs to the LU7TM family.,similarity:Belongs to the LU7TM family.,

Research Area

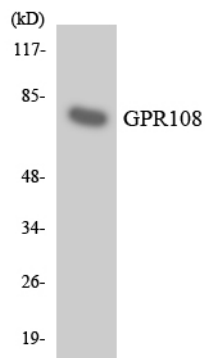
Image Data



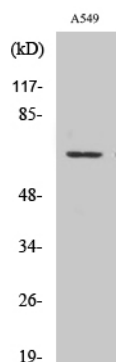
Immunofluorescence analysis of HUVEC cells, using GPR108 Antibody. The picture on the right is blocked with the synthesized peptide.



Western blot analysis of lysates from A549 cells, using GPR108 Antibody. The lane on the right is blocked with the synthesized peptide.



Western blot analysis of the lysates from HT-29 cells using GPR108 antibody.



Western Blot analysis of various cells using GPR108 Polyclonal Antibody