

**Product Name: GPR107 Rabbit Polyclonal Antibody****Catalog #: APRab11623**

For research use only.

**Summary**

<b>Description</b>	Rabbit polyclonal Antibody
<b>Host</b>	Rabbit
<b>Application</b>	WB,IHC,ICC/IF,ELISA
<b>Reactivity</b>	Human,Rat,Mouse
<b>Conjugation</b>	Unconjugated
<b>Modification</b>	Unmodified
<b>Isotype</b>	IgG
<b>Clonality</b>	Polyclonal
<b>Form</b>	Liquid
<b>Concentration</b>	1mg/ml
<b>Storage</b>	Aliquot and store at -20°C (valid for 12 months). Avoid freeze/thaw cycles.
<b>Shipping</b>	Ice bags
<b>Buffer</b>	Liquid in PBS containing 50% glycerol, 0.5% protective protein and 0.02% New type preservative N.
<b>Purification</b>	Affinity purification

**Application**

<b>Dilution Ratio</b>	WB 1:500-1:2000,IHC 1:100-1:300,ICC/IF 1:200-1:1000,ELISA 1:5000-1:10000
<b>Molecular Weight</b>	67kDa

**Antigen Information**

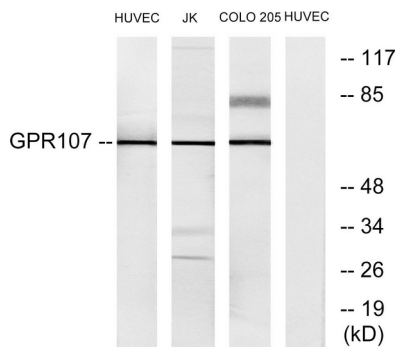
<b>Gene Name</b>	GPR107
<b>Alternative Names</b>	GPR107; KIAA1624; LUSTR1; Protein GPR107; Lung seven transmembrane receptor 1
<b>Gene ID</b>	57720.0
<b>SwissProt ID</b>	Q5VW38
<b>Immunogen</b>	The antiserum was produced against synthesized peptide derived from human GPR107. AA range:141-190

**Background**

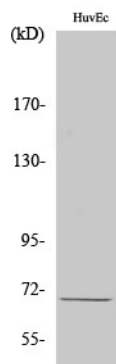
similarity:Belongs to the LU7TM family.,similarity:Belongs to the LU7TM family.,

## Research Area

## Image Data



Western blot analysis of lysates from HUVEC, Jurkat, and COLO205 cells, using GPR107 Antibody. The lane on the right is blocked with the synthesized peptide.



Western Blot analysis of various cells using GPR107 Polyclonal Antibody