

---

**Product Name: GPR101 Rabbit Polyclonal Antibody****Catalog #: APRab11620**

For research use only.

**Summary**

<b>Description</b>	Rabbit polyclonal Antibody
<b>Host</b>	Rabbit
<b>Application</b>	WB,ICC/IF,ELISA
<b>Reactivity</b>	Human,Mouse,Monkey
<b>Conjugation</b>	Unconjugated
<b>Modification</b>	Unmodified
<b>Isotype</b>	IgG
<b>Clonality</b>	Polyclonal
<b>Form</b>	Liquid
<b>Concentration</b>	1mg/ml
<b>Storage</b>	Aliquot and store at -20°C (valid for 12 months). Avoid freeze/thaw cycles.
<b>Shipping</b>	Ice bags
<b>Buffer</b>	Liquid in PBS containing 50% glycerol, 0.5% protective protein and 0.02% New type preservative N.
<b>Purification</b>	Affinity purification

**Application**

<b>Dilution Ratio</b>	WB 1:500-1:2000,ICC/IF 1:200-1:1000,ELISA 1:5000-1:10000
<b>Molecular Weight</b>	60kDa

**Antigen Information**

<b>Gene Name</b>	GPR101
<b>Alternative Names</b>	GPR101; Probable G-protein coupled receptor 101
<b>Gene ID</b>	83550.0
<b>SwissProt ID</b>	Q96P66
<b>Immunogen</b>	The antiserum was produced against synthesized peptide derived from human GPR101. AA range:451-500

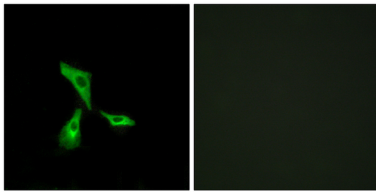
**Background**

The protein encoded by this gene is an orphan G protein-coupled receptor of unknown function. The encoded protein is a

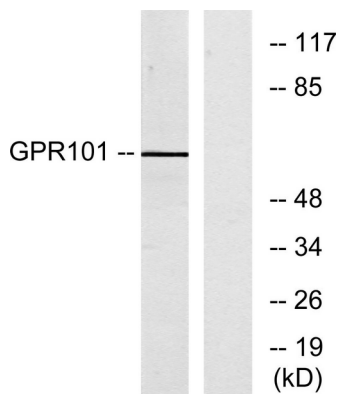
member of a family of proteins that contain seven transmembrane domains and transduce extracellular signals through heterotrimeric G proteins. [provided by RefSeq, Sep 2011],function:Orphan receptor.,similarity:Belongs to the G-protein coupled receptor 1 family.,

## Research Area

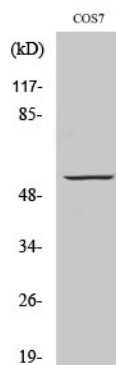
## Image Data



Immunofluorescence analysis of HeLa cells, using GPR101 Antibody. The picture on the right is blocked with the synthesized peptide.



Western blot analysis of lysates from COS7 cells, using GPR101 Antibody. The lane on the right is blocked with the synthesized peptide.



Western Blot analysis of various cells using GPR101 Polyclonal Antibody diluted at 1 : 500