
Product Name: GPR10 Rabbit Polyclonal Antibody**Catalog #: APRab11618**

For research use only.

Summary

Description	Rabbit polyclonal Antibody
Host	Rabbit
Application	WB,ICC/IF,ELISA
Reactivity	Human,Mouse,Rat
Conjugation	Unconjugated
Modification	Unmodified
Isotype	IgG
Clonality	Polyclonal
Form	Liquid
Concentration	1mg/ml
Storage	Aliquot and store at -20°C (valid for 12 months). Avoid freeze/thaw cycles.
Shipping	Ice bags
Buffer	Liquid in PBS containing 50% glycerol, 0.5% protective protein and 0.02% New type preservative N.
Purification	Affinity purification

Application

Dilution Ratio	WB 1:500-1:2000,ICC/IF 1:200-1:1000,ELISA 1:10000-1:20000
Molecular Weight	41kDa

Antigen Information

Gene Name	PRLHR
Alternative Names	PRLHR; GPR10; GR3; Prolactin-releasing peptide receptor; PrRP receptor; PrRPR; G-protein coupled receptor 10; hGR3
Gene ID	2834.0
SwissProt ID	P49683
Immunogen	The antiserum was produced against synthesized peptide derived from human PRLHR. AA range:184-233

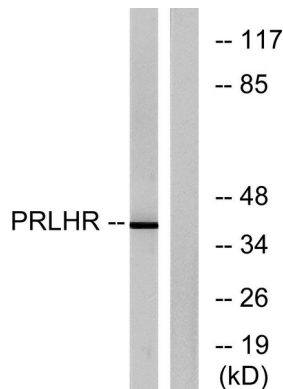
Background

PRLHR is a 7-transmembrane domain receptor for prolactin-releasing hormone (PRLH; MIM 602663) that is highly expressed in anterior pituitary (Ozawa et al., 2002 [PubMed 11923475]).[supplied by OMIM, Mar 2008],function:Receptor for prolactin-releasing peptide (PrRP). Implicated in lactation, regulation of food intake and pain-signal processing.,induction:Repressed by bromocriptine, a dopamine agonist.,similarity:Belongs to the G-protein coupled receptor 1 family.,subunit:Interacts through its C-terminal region with the PDZ domain-containing proteins GRIP1, GRIP2 and PICK1. Interacts with PDZ domains 4 and 5 of GRIP1 and with the PDZ domain of PICK1.,tissue specificity:Only detected in the pituitary gland and in all cell types of pituitary adenomas.,

Research Area

Neuroactive ligand-receptor interaction;

Image Data



Western blot analysis of lysates from Jurkat cells, using PRLHR Antibody. The lane on the right is blocked with the synthesized peptide.